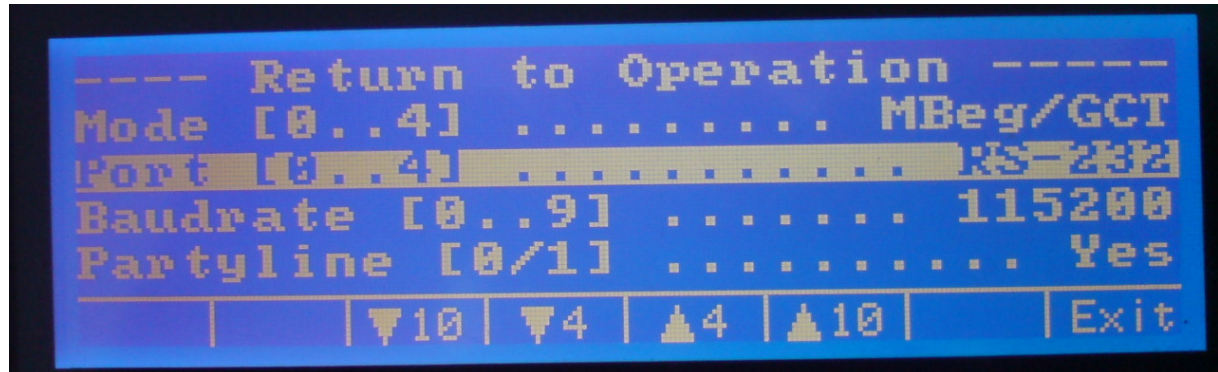
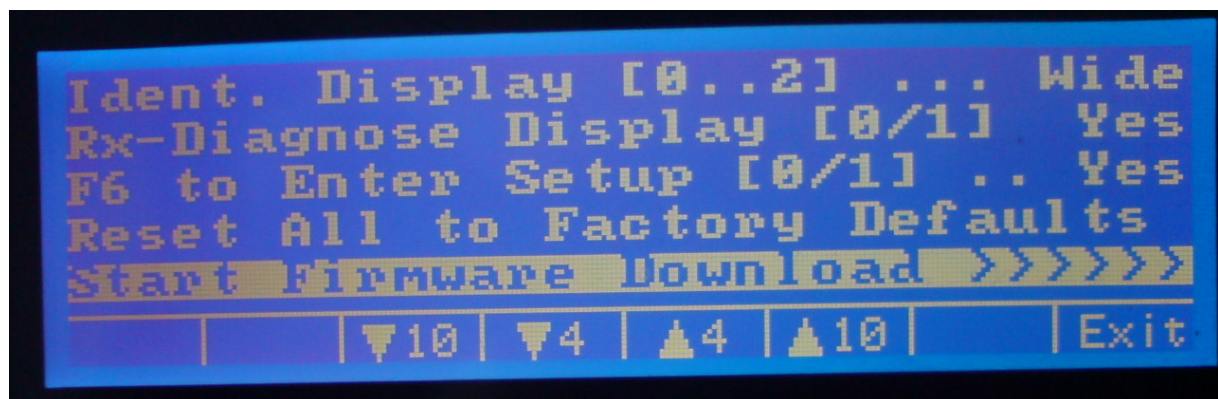


MBEG/GCT-3X-LAN firmware update procedure

Connect the Mbeg with a normal RS232 9pin cable to a PC and connect the power supply. Now go to MBEG menu with button F6 and go down to port feature and push button 2 to select RS232 port.



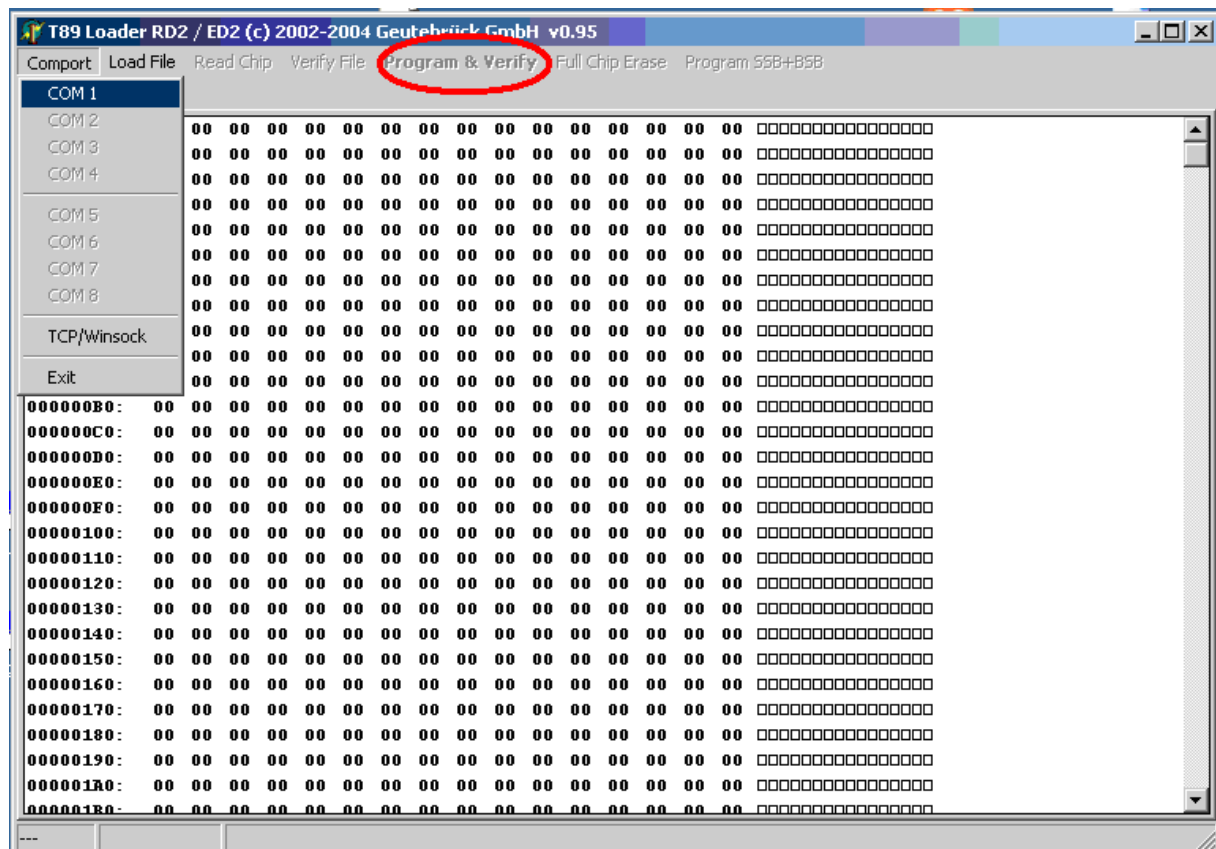
After that go down to the last point of the menu and press return ...



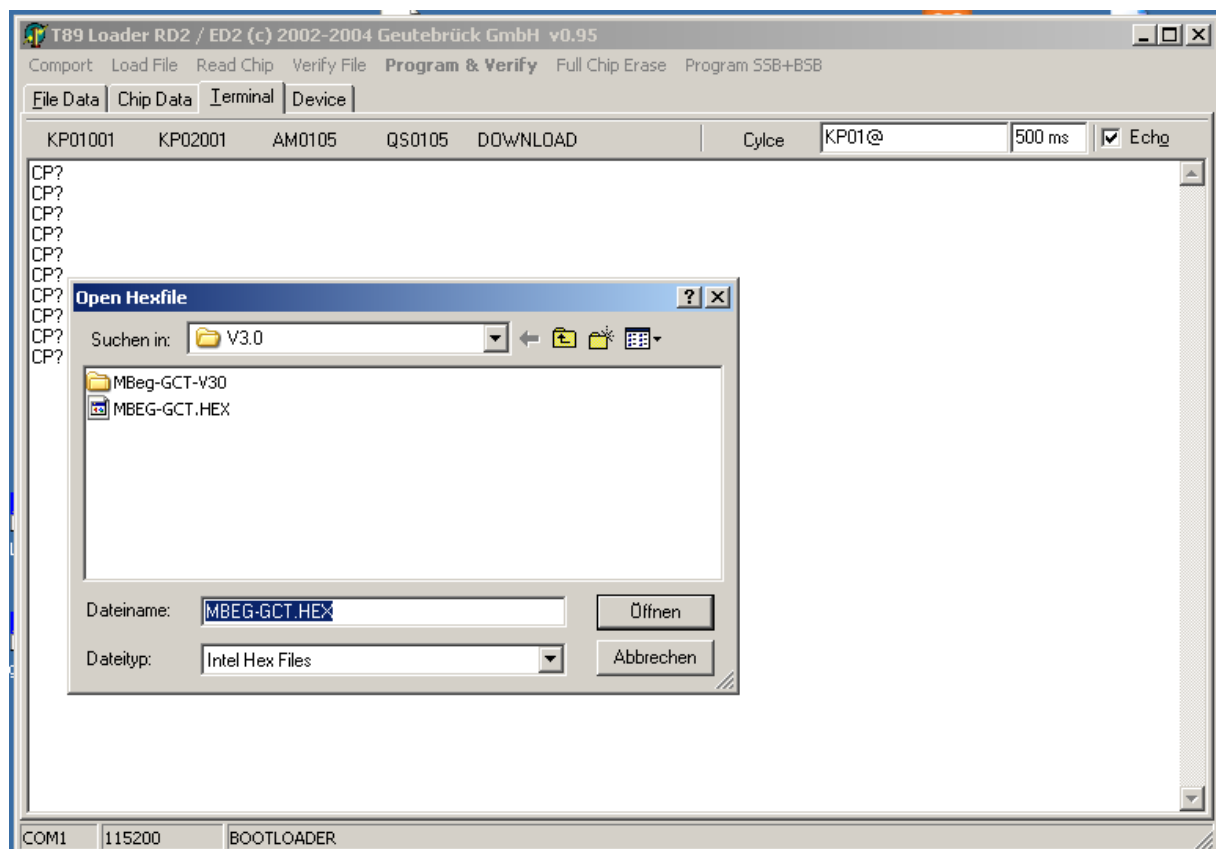
you will see this screen.



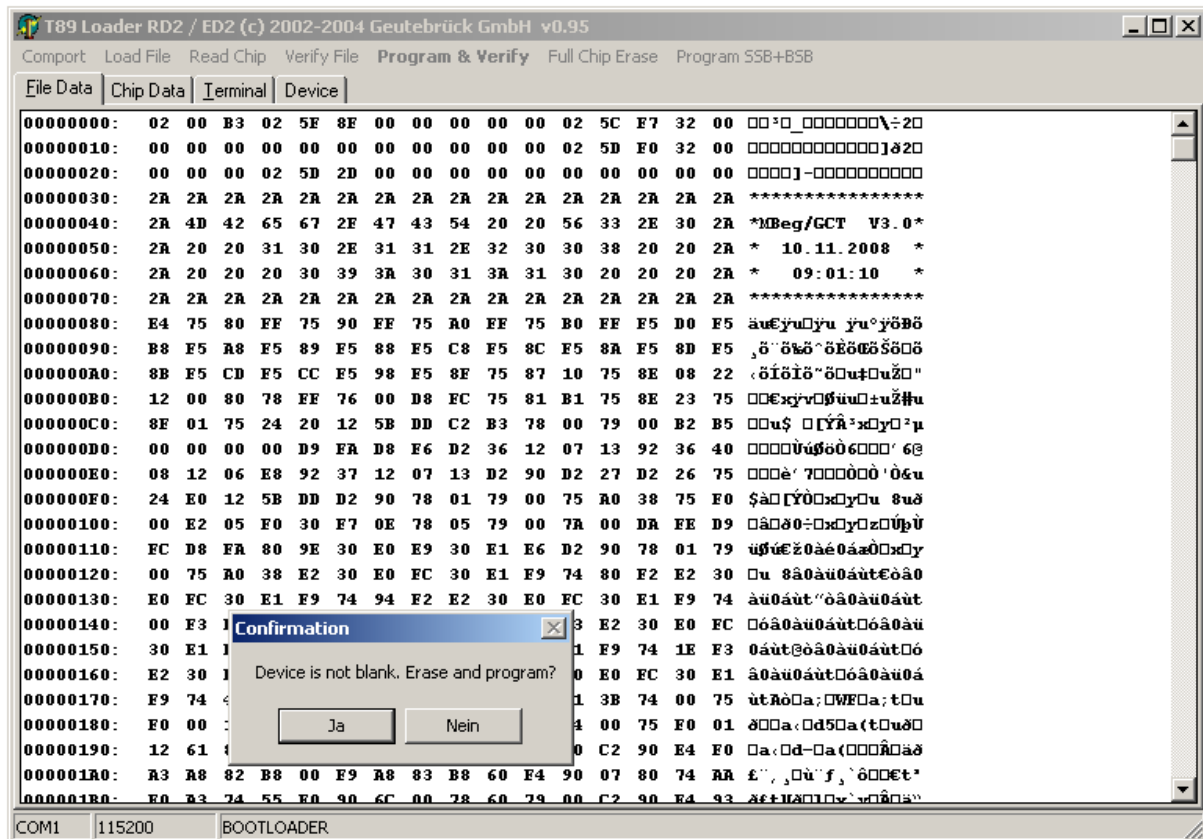
Now open the program T89 loader and go to the menu point "Comport" and choose the port where you have connected the Mbeg to. After that push the "Program & Verify" Button



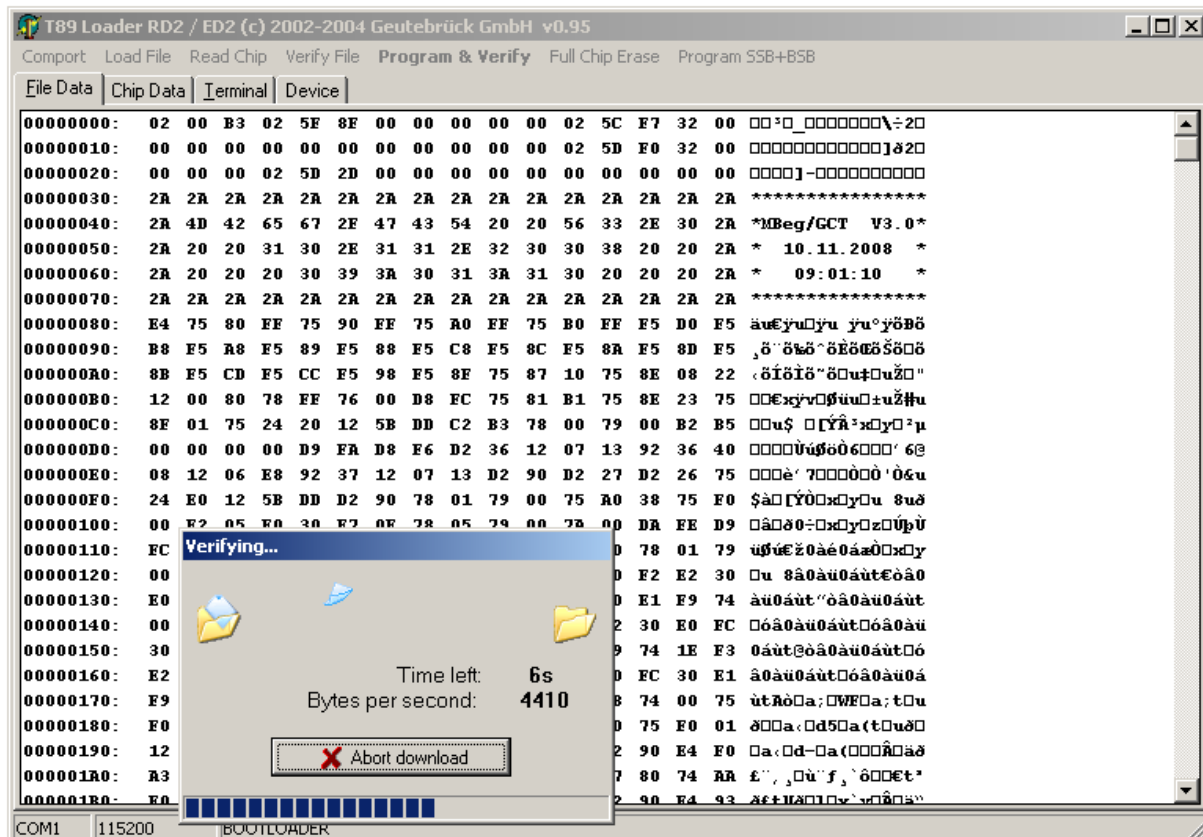
Choose the firmware file you want to flash into the Mbeg.



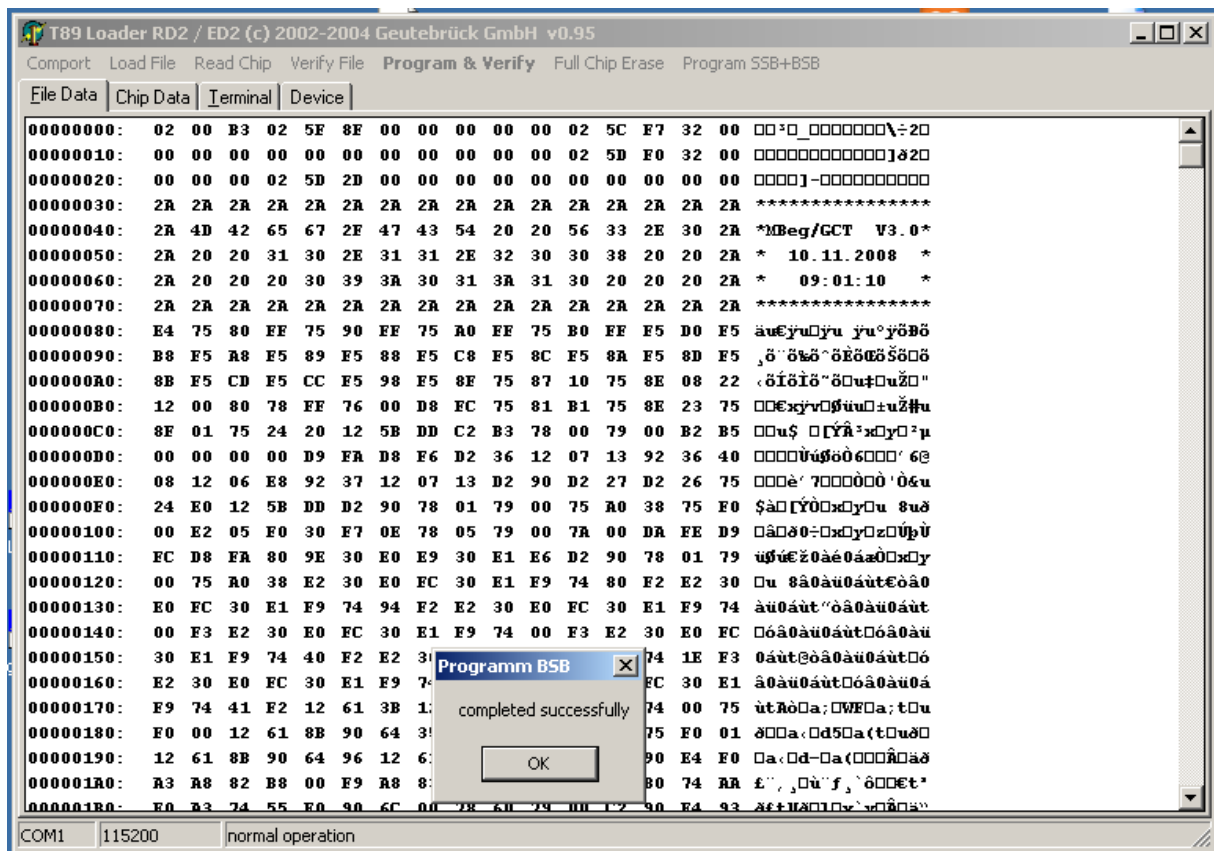
The program will show this screen please press "JA"



Now this flash procedure will start.



After the complete and successful update you will see this screen.



NOW PLEASE DISCONNECT THE POWER SUPPLY AND RE-CONNECT IT AGAIN.



Written by Tobias Schuster am 03.06.2009

GEUTEBRÜCK
Competence in Video Security

GEUTEBRÜCK GmbH

Im Nassen 7-9 | D-53578 Windhagen | Tel. +49 (0)2645 137-0 | Fax-999 E-mail: info@geutebrueck.com | Web:
www.geutebrueck.de