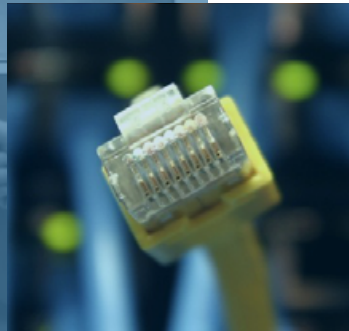


GEUTEBRÜCK
Excellence in Video Security



G-Cam/EWPC-3210

Full HD Ultra-WDR Bullet IP Camera

Installation

Preface

The information given in this manual was current when published. The company reserves the right to revise and improve its products. All specifications are subject to change without notice.

Notice

This manual provides the installation information for the Indoor / Outdoor Full HD Speed Dome IP Camera. To work with the Dome Cameras, any installer or technician must have the following minimum qualifications:

- A basic knowledge of CCTV systems and components
- A basic knowledge of electrical wiring and low-voltage electrical hookups
- A basic knowledge of network system setting
- Have read this manual completely

Copyright

Under copyright laws, the contents of this user manual may not be copied, photocopied, translated, reproduced or reduced to any electronic medium or machine-readable format, in whole or in part, without prior written permission of the company

© 2015 by GEUTEBRÜCK Alle Rechte vorbehalten.

Important Information

Before proceeding, please read and observe all instructions and warnings in this manual. Retain this manual with the original bill of sale for future reference and, if necessary, warranty service. When unpacking the unit, check for missing or damaged items. If any item is missing, or if damage is evident, DO NOT INSTALL OR OPERATE THIS PRODUCT. Contact the dealer for assistance.

Regulation



This device complies with Part 15 of the FCC Rules. Operation is subject to the following two conditions: (1) This device may not cause harmful interference, and (2) this device must accept any interference received, including interference that may cause undesired operation.



This symbol on the product or on its packaging indicates that this product shall not be treated as household waste in accordance with Directive 2002 / 96 / EC. Instead it shall be handed over to the applicable collection point for the recycling of electrical and electronic equipment. By proper waste handling of this product, please ensure that it has no negative consequences for the environment and human health, which could otherwise be caused if this product is thrown into the garbage bin. The recycling of materials will help to conserve natural resources.

For more details information about recycling of this product, please contact the local city office, household waste disposal service or the shop where purchased the product.



Compliance is evidenced by written declaration from our suppliers, assuring that any potential trace contamination levels of restricted substances are below the maximum level set by EU Directive 2002 / 95 / EC, or are exempted due to their application.

Warnings and Cautions

- **Handle the camera carefully**

Do not abuse the camera. Avoid striking, shaking, etc. The camera could be damaged by improper handling or storage.

- **Installing electricity wiring carefully**

Ask qualified personnel of electrical wiring for the installation. Please note that input electricity to the unit is at tolerance of DC 12V / AC 24V \pm 10%.

The camera is capable of surge protection; ensure AC power model unit grounded appropriately against damage of heavy current or electric shock.

- **Do not disassemble the camera**

To prevent electric shock, do not remove screws or covers. There are no user serviceable parts inside. Ask a qualified service person for servicing.

- **Do not block cooling holes on the bracket**

This camera has a cooling fan inside. Blocking the cooling holes leads to build up of heat, and may cause malfunction.

- **Do not operate the camera beyond the specified temperature, humidity or power source ratings**

Use the camera under conditions where temperature is between 0°C ~ 40°C (32°F ~ 104°F), and relative humidity is below 90%.

- **Do not expose the camera to rain or moisture or try to operate in wet areas**

This product is designed for indoor use or locations where it is protected from rain and moisture. Turn the power off immediately if the camera is wet and ask a qualified service person for servicing. Moisture can damage the camera and also create the danger of electric shock.

- **Do not use strong or abrasive detergents when cleaning the camera body**

Use a dry cloth to clean the camera when it is dirty. In case the dirt is hard to remove, use a mild detergent and wipe the camera gently.

- **Never face the camera towards the sun**

Do not aim the camera at bright objects. Whether the camera is in use or not, never aim it at the sun or other extremely bright objects. Otherwise, the camera may be smeared or damaged.

Table of Contents

Preface	1
Regulation	2
Warnings and Cautions	3
1. Overview	5
1.1 Features	5
1.2 Package Contents	6
1.3 Dimensions.....	7
1.4 microSD Card Slot / Factory Default Button / Reboot Button	8
2. Camera Cabling.....	9
2.1 All-in-One Cable	9
2.2 Connect Power	10
2.3 Connect Ethernet Cable	10
2.4 Connect Alarm I/O	10
2.5 Waterproof Cable Connectors (worst case only!).....	11
3. Installation	12
3.1 Ceiling / Wall Mounting.....	12
3.2 Desiccant Application	14
4. System Requirements	15
5. Access Camera	16
6. Setup Video Resolution.....	19
6.1 Configuration Files Export / Import.....	20
7. Commissioning in GEUTEBRÜCK Software	21
7.1 Commissioning of the IP Camera in GSC-Setup	21
7.2 Commissioning of IP Cameras in G-Set.....	26
Appendix A: Technical Specifications.....	30
Appendix B: Delete the Existing DC Viewer	31
Appendix C: Setup Internet Security	32

1. Overview

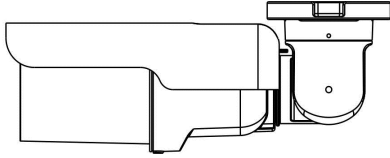


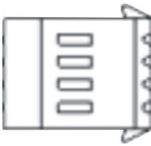

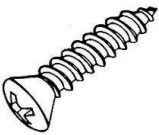

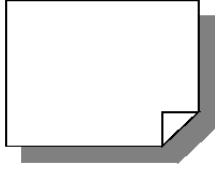
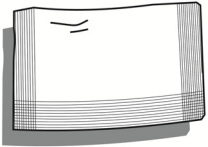
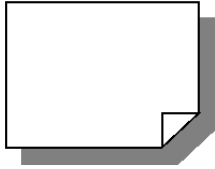
Supported with both H.264 and MJPEG standard, the product series not only features in superior Full HD resolution for real-time streaming at 25/30 fps, but also supplies D1 real-time streaming. With more computing power, the IP camera could provide more flexibility for users and system managers.

1.1 Features

- Progressive Scan CMOS Sensor
- Dual Streams, Full HD 1080p real-time + D1 real-time
- Stream Compression- H.264 Baseline / Main / High Profile + MJPEG
- Multi-language Support
- Tampering Alarm
- Wide Dynamic Range
- Remote Zoom & Focus (Motorized Lens)
- Motion Detection
- Privacy Masks
- Smart Picture Quality / 3D Noise Reduction
- Vertical View Mode (Image rotation by 90 degrees)
- Smart IR Mode
- Network Failure Detection
- Day/Night (ICR)
- IR LED Module (working distance up to 25 m)
- microSD Support
- Weatherproof (IP66 International)
- Sunshield
- Integrated Mounting Bracket with Cable Management
- ONVIF Support

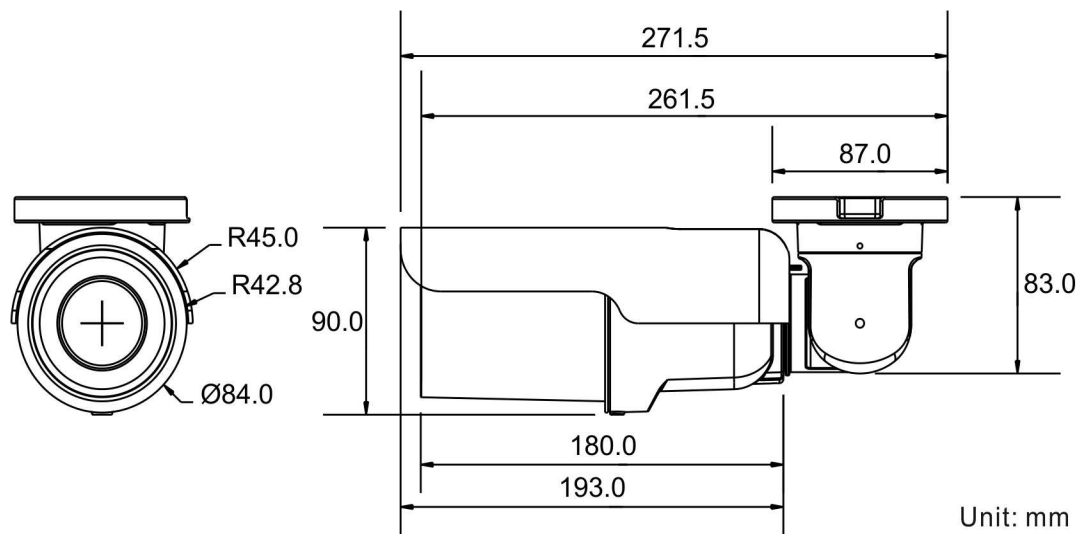
1.2 Package Contents

Please check the package contains the following items listed below.

 <p>EWPC-3210 Full HD Ultra-WDR IR Bullet IP Camera (Cable included)</p>	 <p>Power Terminal Block</p>
 <p>M4 Inner Hex Wrench (x1)</p>	 <p>Alarm Terminal Block (x1)</p>
 <p>Plastic Screw Anchors (x5)</p>	 <p>M4 Self-tapping Screws (x5)</p>
 <p>CD (software and documentation)</p>	 <p>Quick Guide</p>
 <p>Desiccant (Assembly instructions in the Installation manual)</p>	 <p>Desiccant User Guide</p>

1.3 Dimensions

The dimensions of the IP camera are shown below.



1.4 microSD Card Slot / Factory Default Button / Reboot Button

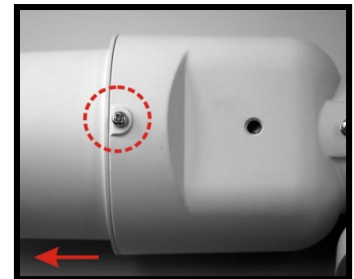
The camera's microSD card slot, factory default button and reboot button are inside the front housing. If users need to use them, the front housing must be opened. Follow the steps below to reach microSD card slot, factory default button and reboot button.



NOTE: Desiccants must be replaced every time the front housing is opened. After desiccants are replaced, please attach the front housing back to the camera as soon as possible. Otherwise, desiccants will be damped and cannot be used. Refer to chapter 3.2 [Desiccants Application](#).

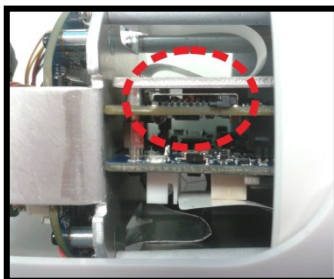
Step 1:

Loosen the screw on the camera housing but do not detach it. Then separate the front housing from the camera.

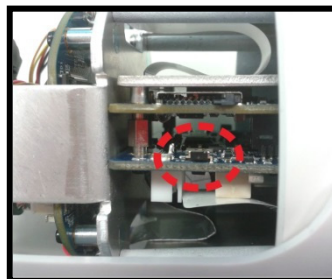


Step 2:

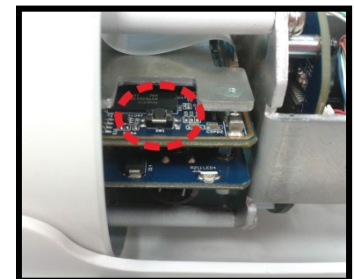
The position of microSD card slot, default button and reboot button are as shown below.



microSD Card Slot



Default Button



Reboot Button



NOTE: It is not recommend to record with the microSD card for 24/7 continuously, as it may not be able to support long term continuous data read/write. Please contact the manufacturer of the microSD card for information regarding the reliability and life expectancy.

Step 3:

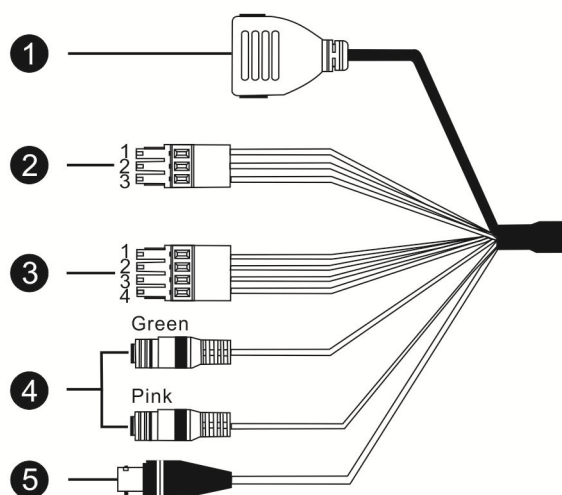
Install the front housing to the camera, and tighten the screw on the camera housing.

2. Camera Cabling

Before users connect cables, make sure that all cables and the power adaptor are placed in dry and well-waterproofed environments, e.g. waterproof boxes. The purpose is to prevent moisture accumulation inside the camera and moisture penetration into cables, which might lead to camera breakdown. Please refer to the follow sections to complete IP camera connection.

2.1 All-in-One Cable

The diagram below shows the All-in-One cable of the IP camera. Definition for each cable is also given as follows.



No.	Cable	Pin	Definition	Remarks
1	Network (with PoE+)	-	RJ-45 connector with LED	
2	Power (3-pin Terminal Block)	1	AC 24V 1	Power connection
		2	GND	
		3	AC 24V 2	
3	Alarm I/O (4-pin Terminal Block)	1	Alarm In -	Alarm connection
		2	Alarm In +	
		3	Alarm Out -	
		4	Alarm Out +	
4	Audio I/O	Green	Line Out	Two-way audio transmission
		Pink	Line In / Mic In	
5	BNC	-	Analog video output	

2.2 Connect Power

For power connection, please use a 24 VAC / 12 VDC adaptor and connect it to the 3-pin terminal block of the All-in-One cable and the power outlet. Alternatively, users can power the camera by PoE+ if a PSE switch is available. Please refer to the section below for Ethernet cable connection.



NOTE: If PoE+ is used, make sure Power Sourcing Equipment (PSE) is in use in the network.

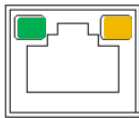
2.3 Connect Ethernet Cable

To have best transmission quality, cable length shall not exceed 100 meters. Connect one end of the Ethernet cable to the RJ-45 connector of the All-in-One cable, and plug the other end of the cable to the network switch or PC.



NOTE: In some cases, Ethernet crossover cable might be needed when connecting the IP Camera directly to the PC.

Check the status of the link indicator and activity indicator LEDs. If the LEDs are unlit, please check the LAN connection.



Green Link Light indicates good network connection.

Orange Activity Light flashes for network activity indication.

2.4 Connect Alarm I/O

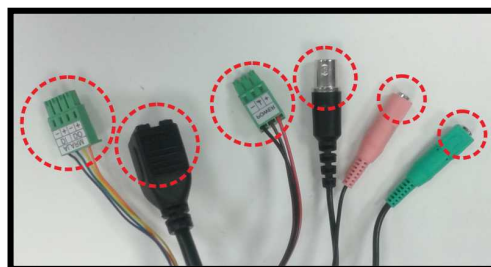
For Alarm I/O connection, please connect alarm devices to the 4-pin terminal block of the All-in-One cable.

2.5 Waterproof Cable Connectors (worst case only!)

Follow the steps below to waterproof the connectors of the All-in-One cable.

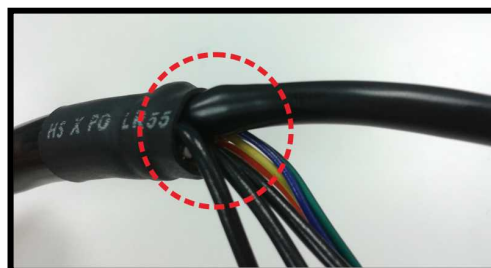
Step 1:

Connect the required devices to the All-in-One cable and coat the joints with silicone gel. There should be no gap between the connectors and the cables. For alarm I/O connector and power connector, make sure the side with wires attached is also sealed with silicone gel.



Step 2:

Seal the end of the rubber coating of the All-in-One cable as indicated in the figure on the right. Please use enough silicone gel to fill in the hose and wrap around each wires; otherwise, waterproof function cannot be guaranteed.



3. Installation

Please read the instructions provided in this chapter thoroughly before installing the IP camera.

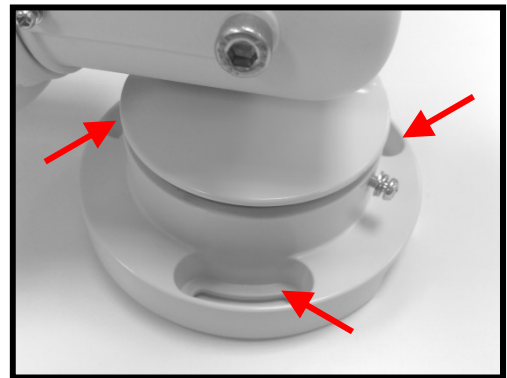
3.1 Ceiling / Wall Mounting

The camera can be installed directly to a wall or ceiling with the integrated 2-axis adjustable Bracket Mount. Please note that the wall or ceiling must have enough strength to support the camera.

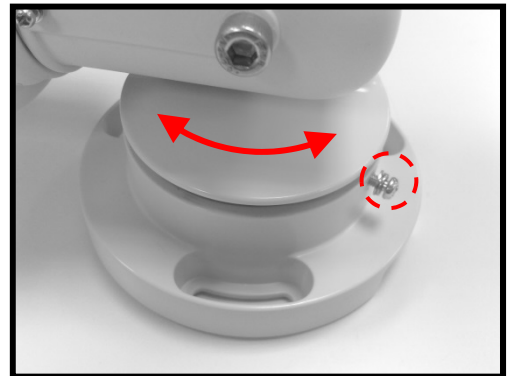
Follow the steps below to install the camera.

Step 1:

Place the camera at the installation location. On the ceiling / wall, mark the positions of the three screw holes of the camera.



If the screw holes are blocked by the camera body, loosen the screw shown in the right figure but do not detach it. Then rotate the camera body to reach the screw holes.



Step 2:

At the center of the three marked holes, draw a cable entry hole with 30 mm diameter (radius as 15 mm) and drill the cable entry hole. Then drill a hole slightly smaller than the supplied plastic screw anchor on each marked screw hole. Lastly, insert the plastic screw anchors into the drilled holes.

Step 3:

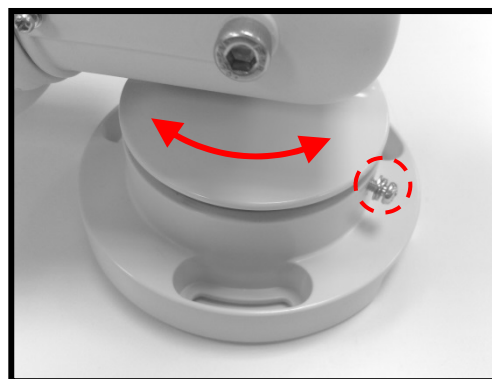
Thread the All-in-One cable of the camera through the cable entry hole. Refer to chapter [Camera Cabling](#) for cable connections.

Step 4:

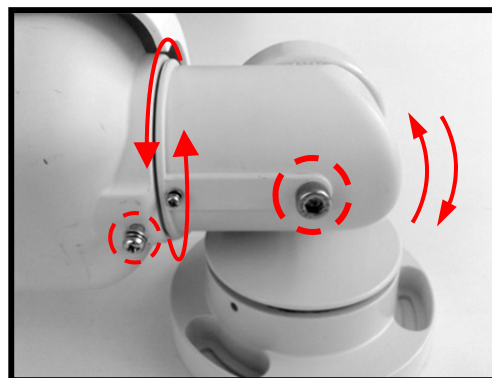
Match the three screw holes of the camera with the plastic screw anchors at the installation location. Fasten the camera with the supplied M4 self-tapping screws.

Step 5:

Rotate the camera as shown in the right figure to the desired direction, and tighten the screw to secure the camera.

**Step 6:**

Use the supplied inner hex wrench and a cross screwdriver to loosen the hex bolt and the screw indicated in the right figure. Do not detach the hex bolt and the screw. Point the camera to a desired direction and fasten the hex bolt and the screw.



3.2 Desiccant Application

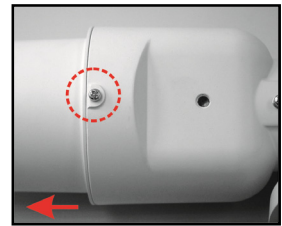
Desiccants are to prevent moisture from condensing on the Glass Cover of the camera. Desiccants should be replaced every time when opening the Front Cover. Follow the steps shown in this guide to place / replace desiccants.



Note: Desiccants are preinstalled in the **Auto Focus** models. Please check the model type before installing desiccants.

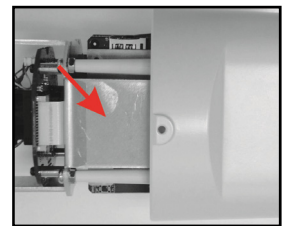
Step 1:

Unscrew the screw on Camera Housing and remove the Front Cover. If users are replacing desiccants, please remove the used desiccants inside the camera.



Step 2:

Carefully tear open the aluminum desiccant bag along the slit on one edge and take the desiccant out. Remove the paper backing of the double sided tape on one side of the desiccant and firmly place the desiccant on the spot as the figures on the right side.



with Heater

Step 3:

Install the Front Cover back in position and tighten the screw.

4. System Requirements

To perform the IP camera via web browser, please ensure the PC is in good network connection, and meet system requirements as described below.

Items	System Requirement
Personal Computer	1. Intel® Pentium® M, 2.16 GHz or Intel® Core™2 Duo, 2.0 GHz 2. 2 GB RAM or more
Operating System	Windows VISTA / Windows XP / Windows 7 + 8
Web Browser	Microsoft Internet Explorer 6.0 or later* Firefox Chrome Safari
Network Card	10Base-T (10 Mbps), 100Base-TX (100 Mbps) or 1000Base-T (1000 Mbps) operation
Viewer	ActiveX control plug-in for Microsoft IE

* Note: in some cases the Internet Explorer's document format "Edge" doesn't show all items on its page. Change it to "IE 10" or lower to solve this (F12).

5. Access Camera

For initial access to the IP camera, users can search the camera through the installer program DeviceSearch.exe, which can be found in "DeviceSearch" folder in the supplied CD.

Accessing the Camera by Device Search Software

Step 1: Double click on the program Device Search.exe.

Step 2: After its window appears, click on the <Device Search> button on the top. All the finding IP devices will be listed in the page.

Step 3: Find the camera in the list by its IP address and click on it. The default IP configuration is **DHCP**. If no DHCP server is in network, the camera sets itself to the address **192.168.0.250**.

Step 4: This IP address may not be in the same LAN as the IP address of the PC. If so, the IP address of the camera needs to be changed. Right click on the camera and click <Network Setup>. Meanwhile, record the MAC address of the camera, for future identification.

Step 5: The <Network Setup> page will come out. Select <DHCP> and click <Apply> down the page. The camera will be assigned with a new IP address.

Step 6: Click <OK> on the Note of setting change. Wait for one minute to re-search the camera (Device Search.exe).

Step 7: Click on the <Device Search> button to re-search all the devices. Find the camera in the list by its MAC address. Then double click or right click and select <Browse> to access the camera directly via a web browser.

Step 8: A prompt window requesting for default username and password will appear. Enter the default username and password shown below to login to the camera.

Login ID	Password
root	admin



NOTE: ID and password are case sensitive.



NOTE: It is strongly advised that administrator's password be altered for the security concerns. Refer to the [Ultra High Definition Multiple Streams IP Camera Menu Tree](#) in the Webbrowser Manual at the supplied CD for further details.

Installing Viewer Software Online

For the initial access to the camera, a client program, Viewer, will be automatically installed to the PC when connecting to the camera.

If the web browser doesn't allow Viewer installation, please check the Internet security settings or ActiveX controls and plug-ins settings (refer to section [Setup Internet Security](#)) to continue the process.

The Information Bar (just below the URL bar) may come out and ask for permission to install the ActiveX Control for displaying video in browser. Right click on the Information Bar and select <Install ActiveX Control...> to allow the installation.

The download procedure of Viewer software is specified as follows.

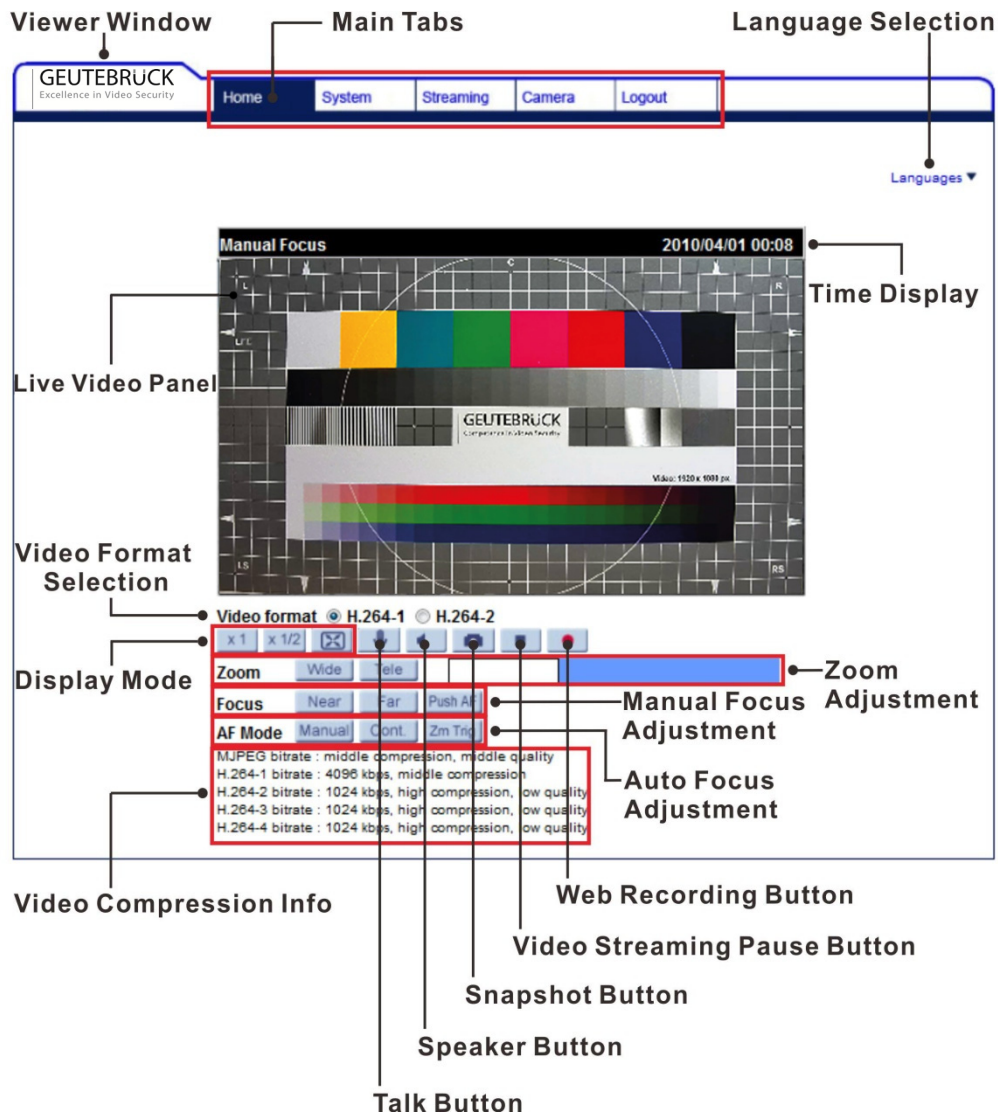
Step 1: In the Viewer installation window, click on <Next> to start installation.

Step 2: The status bar will show the installation progress. After the installation is completed, click on <Finish> to exit the installation process.

Step 3: Click on <Finish> to close the Viewer installation page.

Once the Viewer is successfully installed, the Home page of the IP camera will be displayed as the figure below.

Motorized lens models



Zoom and Focus adjustment (motorized lens models only)

The live image will be displayed on the Homepage when the camera is successfully accessed. If zoom or focus is not at the desired position, please adjust them. As for **motorized lens** models, use the function buttons on the Homepage to adjust zoom and focus.



NOTE: Please refer to the [Full HD Ultra-WDR IP Camera Menu Tree](#) in the Webbrowser Manual at supplied CD for more button function details.

6. Setup Video Resolution

Users can setup video resolution on Video Format page of the user-friendly browser-based configuration interface.

Video Format can be found under this path: **Streaming > Video Format**.

GEUTEBRUCK
Excellence In Video Security

Home System **Streaming** Camera Logout

Video Format

Video Compression

Video OCX Protocol

Video Frame Rate

Video Mask

Audio

Video Format

Video Resolution :

H.264 + H.264 + H.264 + H.264 ▼

H.264-1 format : 1920 x 1080 (15 fps) ▼

H.264-2 format : 1280 x 1024 (15 fps) ▼

H.264-3 format : 1280 x 720 (15 fps) ▼

H.264-4 format : 720 x 480 (15 fps) ▼

Save

Note :
Image attachment by FTP or E-mail will be available only while MJPEG streaming is selected.

Text Overlay Settings :

☐ Include date ☐ Include time

☐ Include text string:

Save

Video Rotate Type :

Normal video ▼

Save

GOV Settings :

H.264-1 GOV Length : H.264-2 GOV Length :

H.264-3 GOV Length : H.264-4 GOV Length :

Save

H.264 Profile :

H.264-1 : Main profile ▼ H.264-2 : Main profile ▼

H.264-3 : Main profile ▼ H.264-4 : Main profile ▼

Save

The default values of video resolution are as below.

2M	H.264- 1920 x 1080 (15 fps) + H.264- 1280 x 720 (30 fps)
-----------	--

For more details about combinations of video resolution, please refer to the Full HD Ultra-WDR IP Camera Menu Tree in the supplied CD.

6.1 Configuration Files Export / Import

To export / import configuration files, users can access the Maintenance page on the user-friendly browser-based configuration interface.

The Maintenance setting can be found under this path: **System > Maintenance**.

Users can export configuration files to a specified location and retrieve data by uploading an existing configuration file to the IP camera. It is especially convenient to make multiple cameras having the same configuration.

Export

Users can save the system settings by exporting the configuration file (.bin) to a specified location for future use. Click on the <Export> button, and the popup File Download window will come out. Click on <Save> and specify a desired location for saving the configuration file.

Upload

To upload an existing configuration file to the IP camera, please first click on <Browse> to select the configuration file, and then click on the <Upload> button for uploading.

7. Commissioning in GEUTEBRÜCK Software



Attention: To install the IP cameras correctly, the software must be:

- **GeViScope/re_porter** **Version 7.5.960.11** or higher
- **G-Scope** **Version 1.1.3.38** or higher

Older Software must be updated. Please download at:
www.geutebrueck.com

7.1 Commissioning of IP Cameras in GSC-Setup

The following steps are required:

- The IP cameras must be assigned an IP address and a function package.
- Adding and configuring of the media channels.
- Proof of the dome functions in Telecontrol.

Following this, the connected IP domes are available in the GeViScope / re_porter.

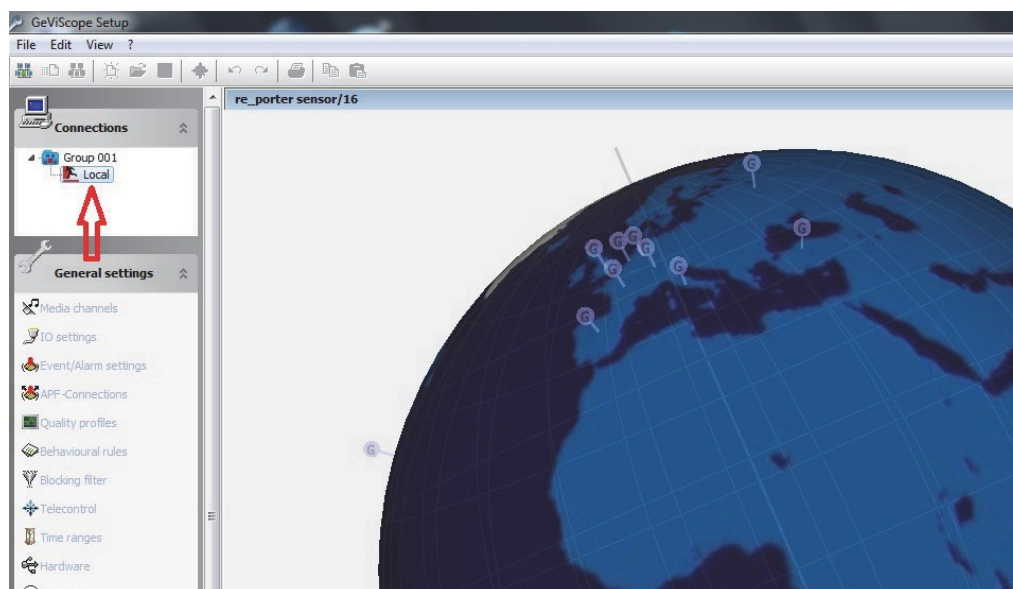
Adding of the E3 IP-cameras

Open the GeViScope setup menu by double-clicking the desktop icon



Step 1: Connect the GeViScope to a server in the Connections menu.

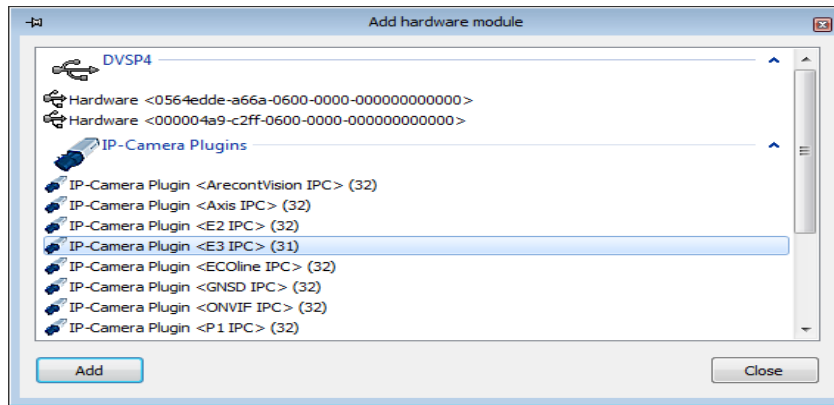
Step 2: Click the left mouse button to open the General Settings menu.



Click the menu item for Hardware in the General Settings menu.

The context menu is opened by clicking the  [Add] button.

In the list that appears, please select the E3 IP camera that you would like to add.



Confirm the selection by clicking **Add**.

The additional Ip camera now appears in the hardware module list.



Click the icon to send the settings to the server.

Select the IP camera that must be configured.

Choose the IP camera settings tab and assign an available IP-address.

Installation information for IP address configuration:

IP domes use static IP addresses. Therefore, the IP address of the GeViScope must have an IP address from the same IP subnet as the IP dome device.

a) Static IP address

GeViScope is assigned a fixed static IP address with the same IP subnet as the IP dome. This is the preferred configuration for a GeViScope that uses IP dome devices.

b) 2 network cards

As an alternative to a) a second network card can be installed in the GeViScope. This makes a dual operation of DHCP and static IP possible. Communication with the IP dome devices is carried out over the second network card that is configured with a static IP address as in a).

c) DHCP Modus

A GeViScope that runs in DHCP mode must be assigned, by the DHCP server, either a static IP

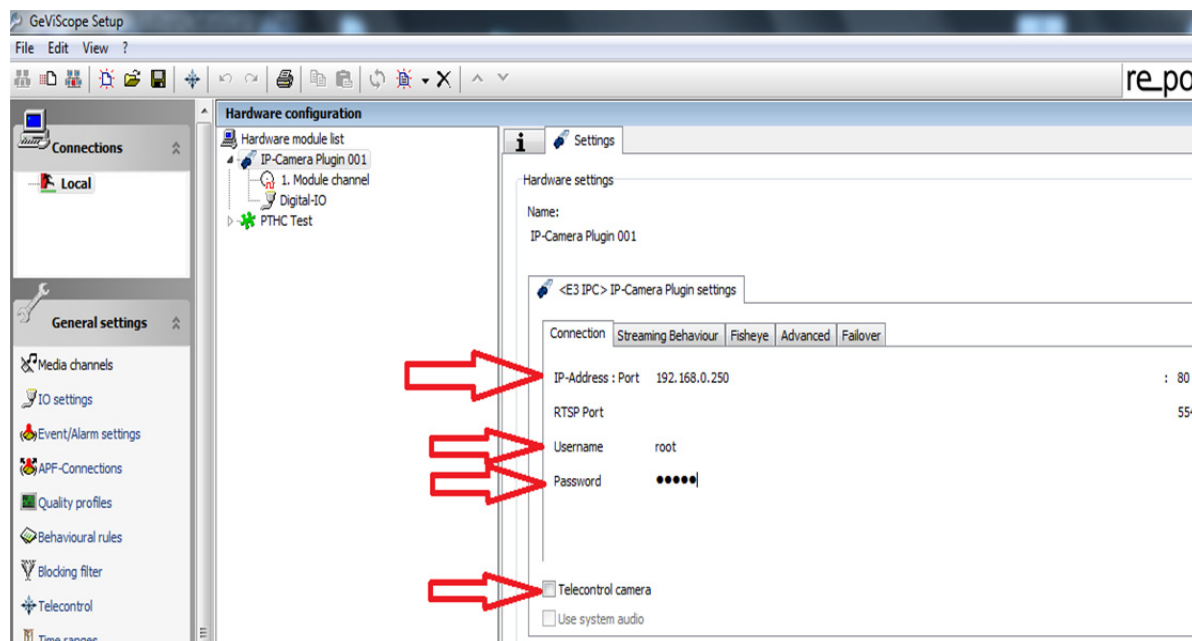
address or an IP address from the same IP subnet as the IP dome devices.

To power up the Camera, please connect the Ethernet cable to the Camera's Ethernet Port and plug the other end of the cable into an IEEE 802.3at High

Power over Ethernet (PoE Plus) Switch. If there is a need to operate the Heater for Outdoor Models, please plug the AC 24V cable into the Camera's Power Connector to power up the Camera instead. •




Attention: A loss of the connection to the DHCP server can cause the connection loss to the IP dome devices! This operating mode should only be used if a continuous connection to the DHCP server is ensured!



Please insert the username “**root**” and password “**admin**”.

Activate the **Telecontrol camera button**, if you want to integrate an IP camera with motorized lens (Zoom and focus remote controlled) or of type EHC.

This activation configures automatically all needed parameters in the Telecontrol menu.

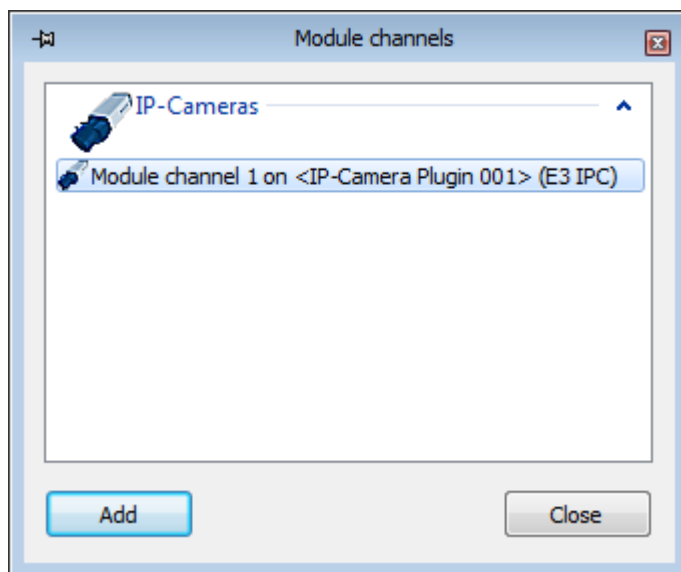
When you have checked all the settings yet again, click the  icon to send the settings to the server.

Adding and configuring media channels

On the General settings menu, click Media channels in order to initialize the media settings. The media channels of the basic unit are displayed.

The context menu is opened by clicking the „Add“ button.

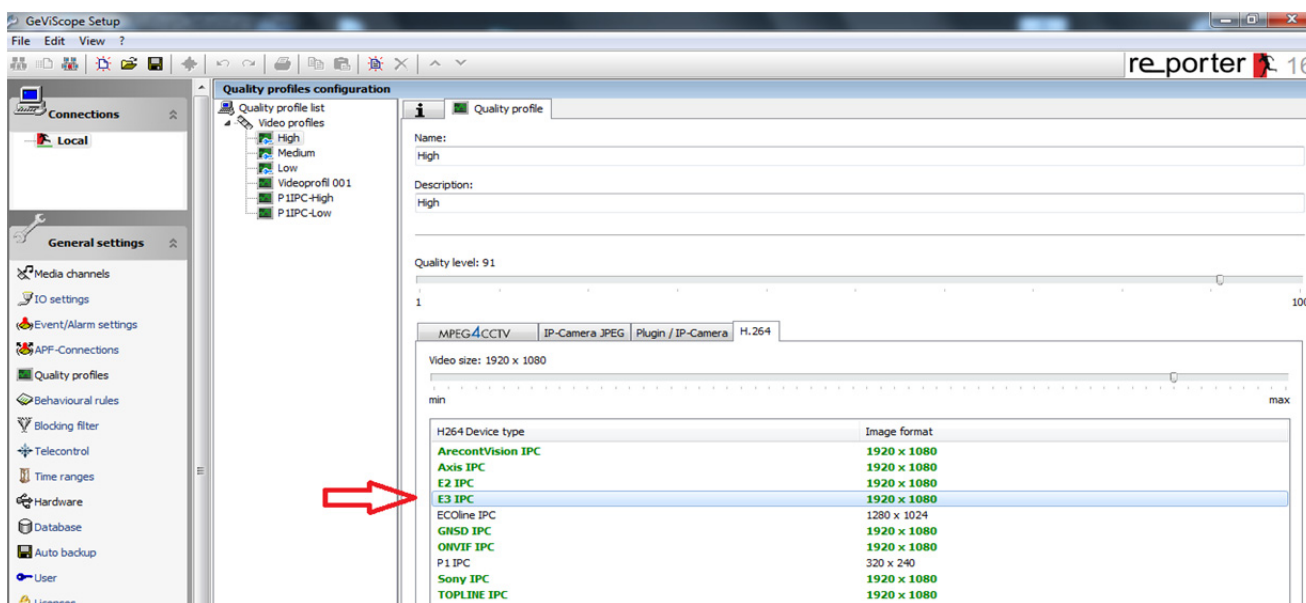
Please select the channels that you would like to add from the list that appears.




Confirm the input by clicking **Add**.

The compression format is automatically set to H.264.

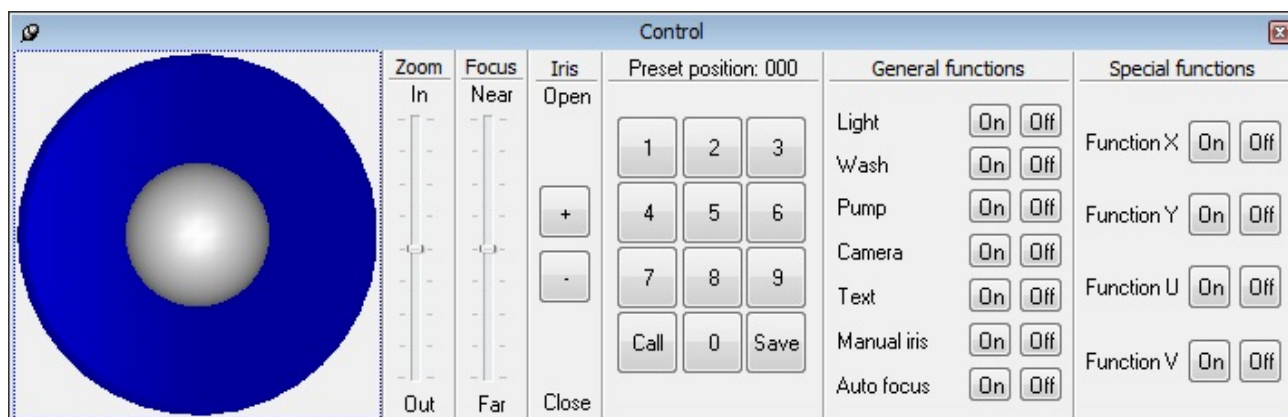
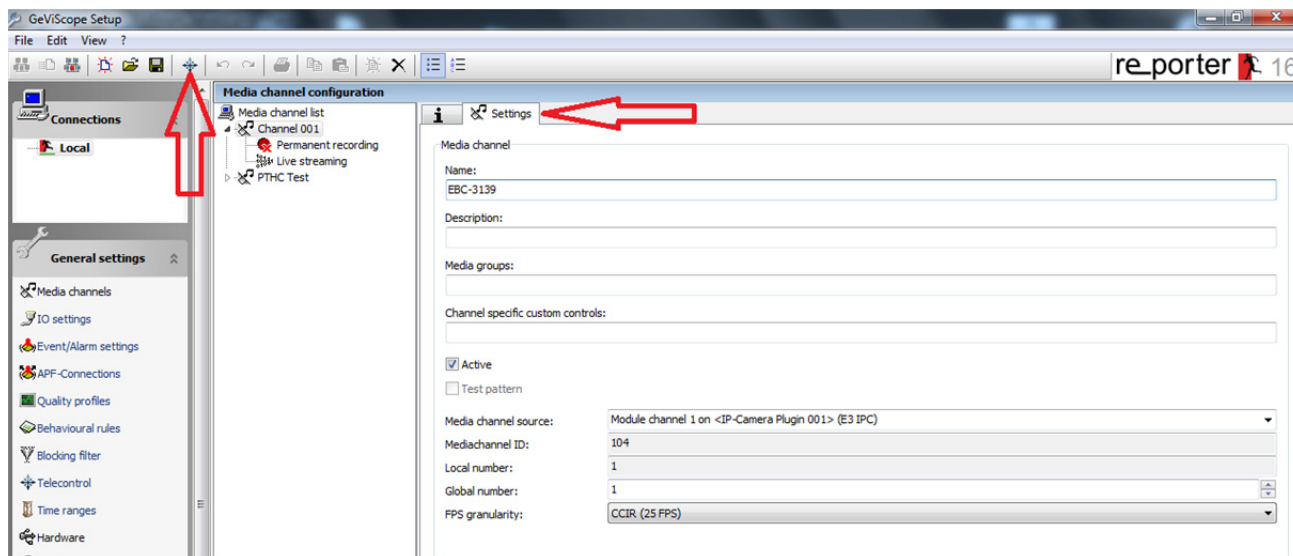
You only should control the image quality in the menu Quality profile. Move the slider till the image format of the chosen plugin type changes to green.



When you have checked all the settings yet again, click the  icon to send the settings to the server.

Please click on tab **Media channels** → folder **Settings** → **Telecontrol** button to check the correct Telecontrol functions with joystick and sliders.

This function is only available for cameras, which have a motorized lens (Zoom and focus remote controlled) or are of type EHC.



NOTE: The joystick operates only with IP cameras of type EHC (Motion within the quad display).

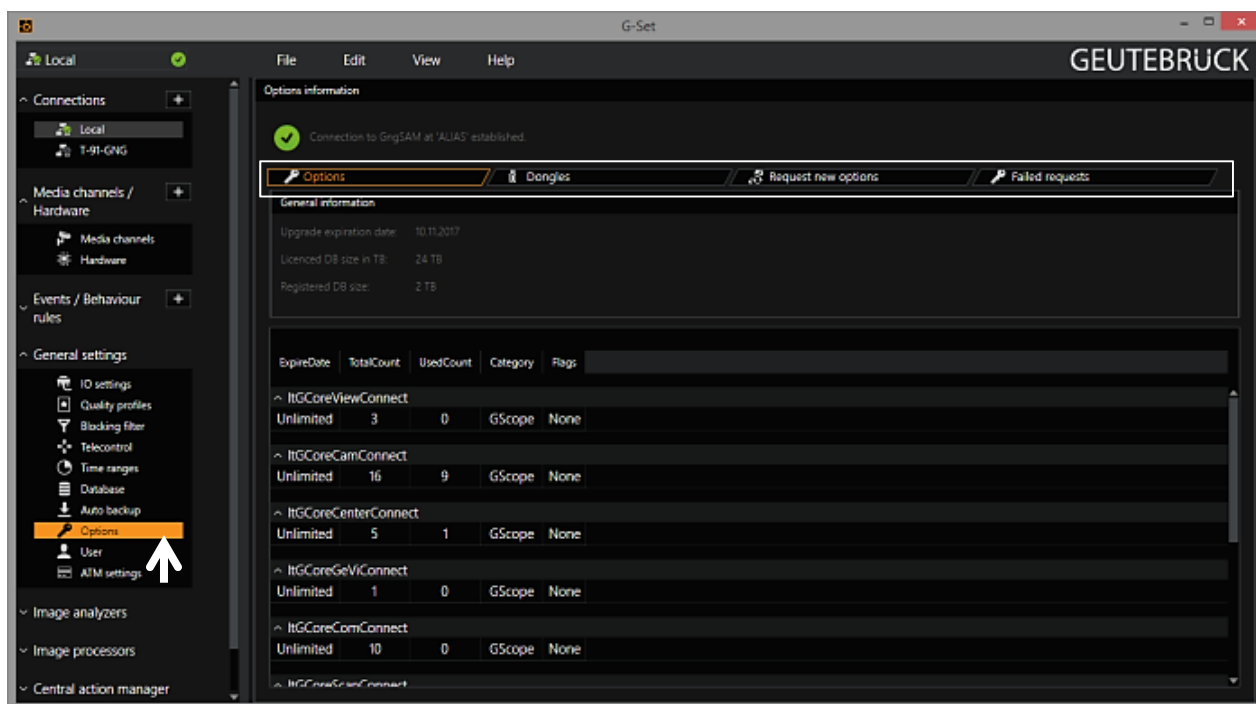
7.2 Commissioning of IP Cameras in G-Set



NOTE: For correct installation of IP cameras one **Option G-Core/CamConnect** must be available for each camera. Available options are shown in G-Set at *General settings - Options*.

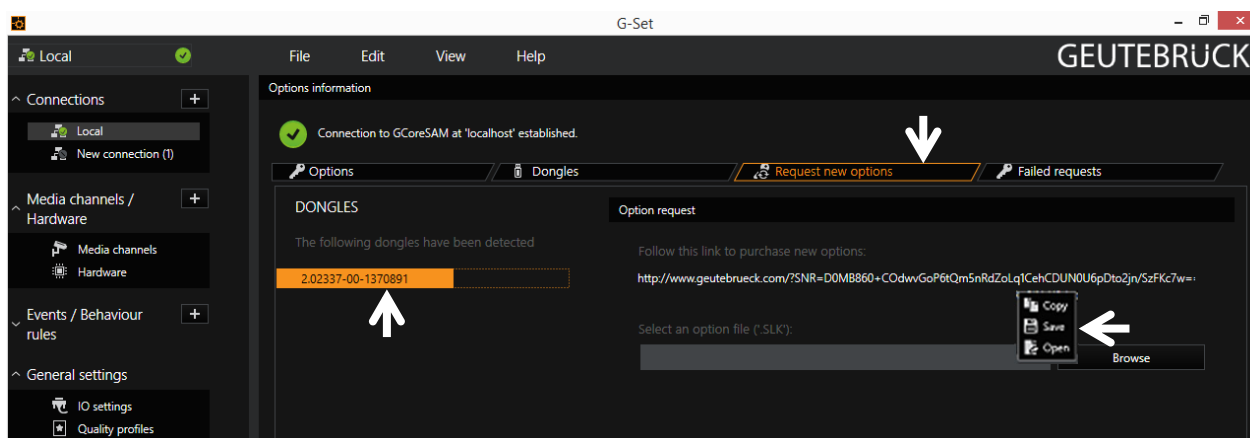
Required options can be ordered using *General settings - Options* in G-Set.

After clicking on *Options*, the options dialog opens with the first tab, which shows an overview of the available options.



The dialog shows the four tabs *Options*, *Dongles*, *Request new options* and *Failed requests*.


Request new options



New options can be requested using this dialog. When you click the dongle that will be assigned the new options, an URL appears in the field *Follow this link to purchase new options*. Right clicking this URL opens a menu in which the URL can be copied, saved or opened in the default browser.

After passing the URL to a browser, follow the instructions on the GEUTEBRÜCK website.

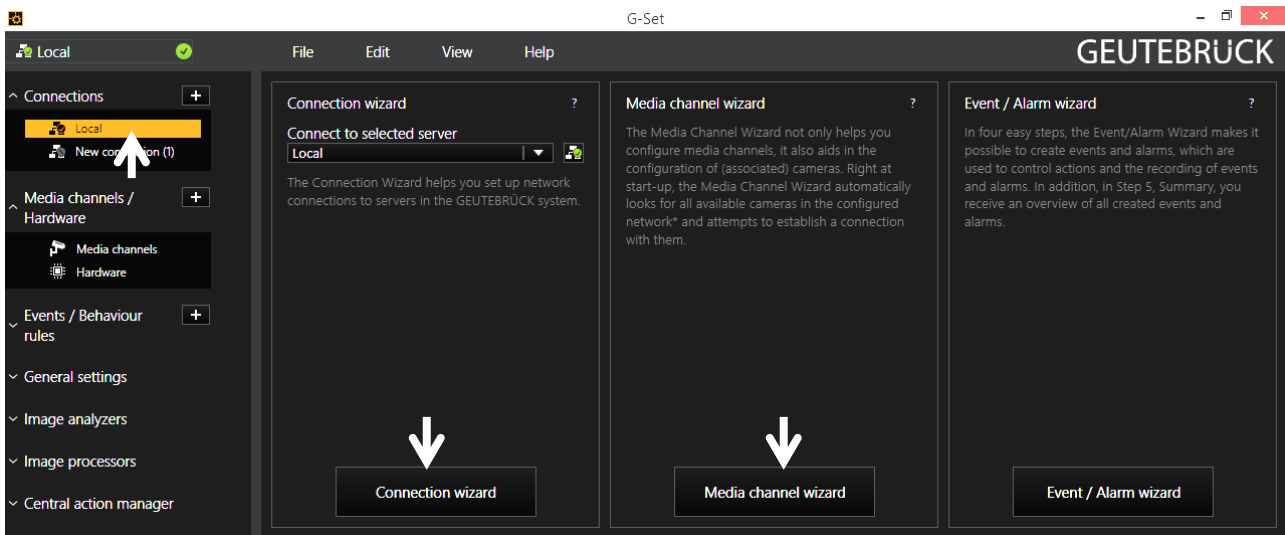
Adding IP Cameras

Please double click at desktop on the G-Set icon  to open the G-Set configuration menu.

Step 1: Connection to a server

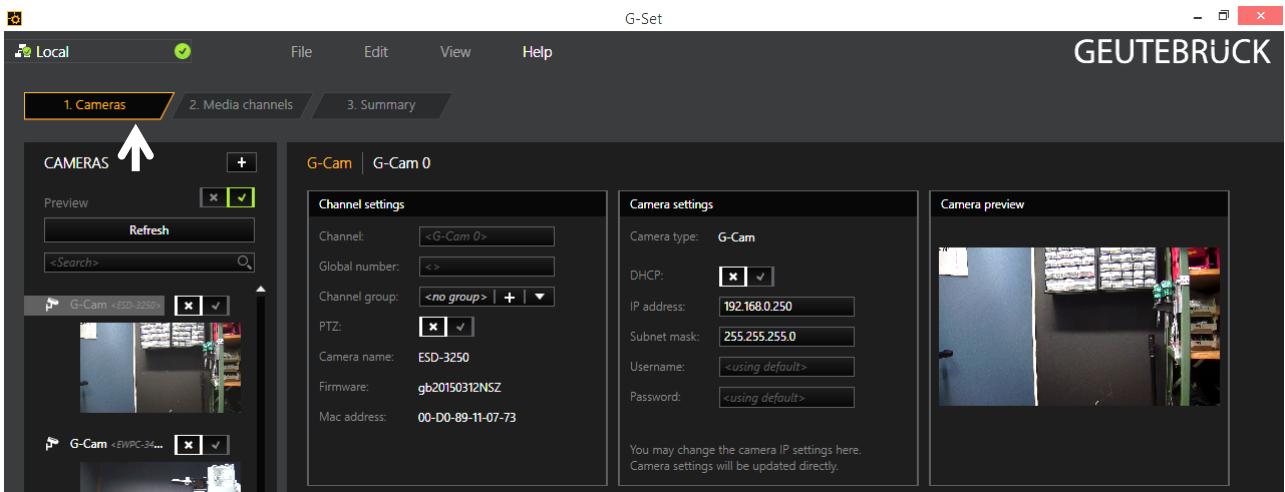
To connect G-Core with a (local or remote) server,

- Double-click on a connection available under *Connections* in the selection menu or
- In the Connection wizard dialog select a server from the list and click on the icon.
- By clicking *Connection wizard*, you can also configure new server connections.



Step 2: Activation and configuration of Media channels.

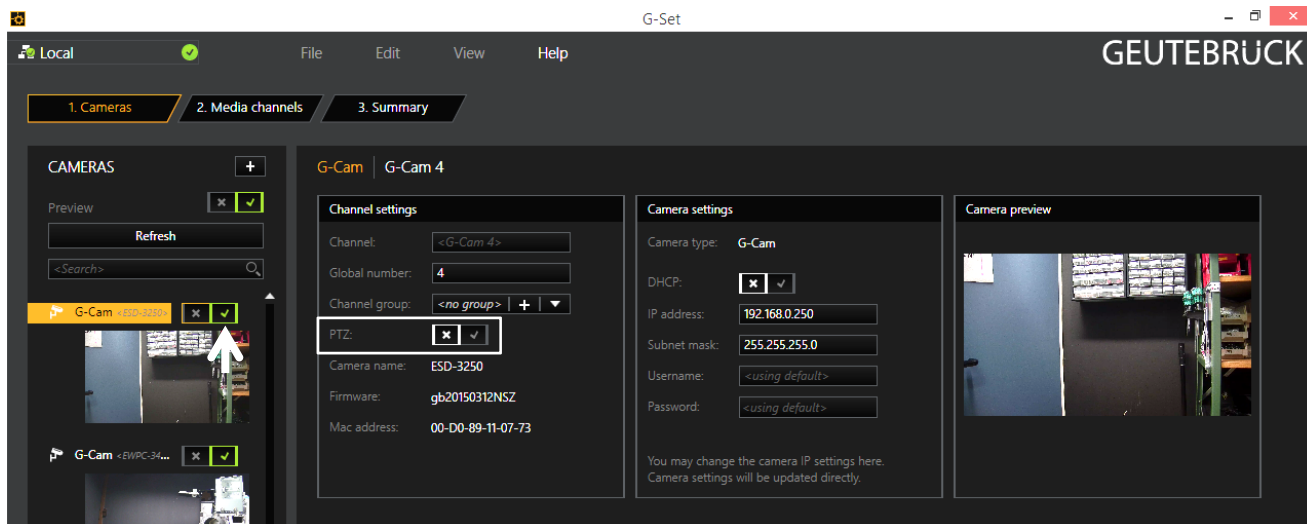
Left mouse click at *Media channel wizard* and click on tab *Cameras* opens the following window:



The Media Channel Wizard automatically searches for existing network cameras and displays them in the first column.

Cameras for which access rights are available are also displayed with a small camera image.

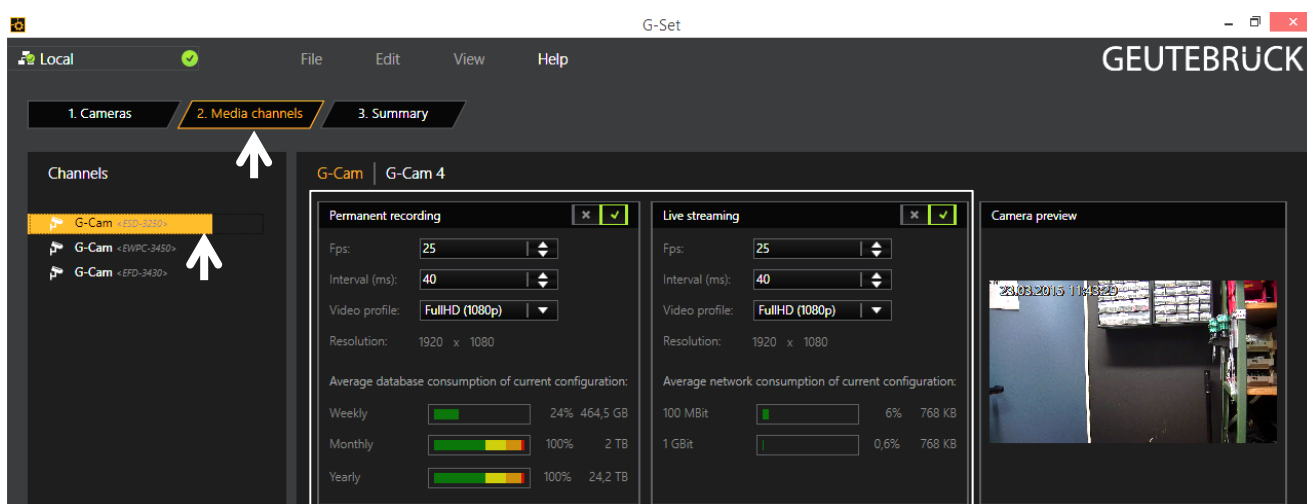
You can now select the desired camera by clicking the tick box (changes to green) and edit the general information and the camera-specific data.



NOTE: If you want to control a PTZ camera, the **tick box PTZ** in the menu *Channel Settings* **must** be activated.

Left click on the tab *Media channels* opens the configuration window.

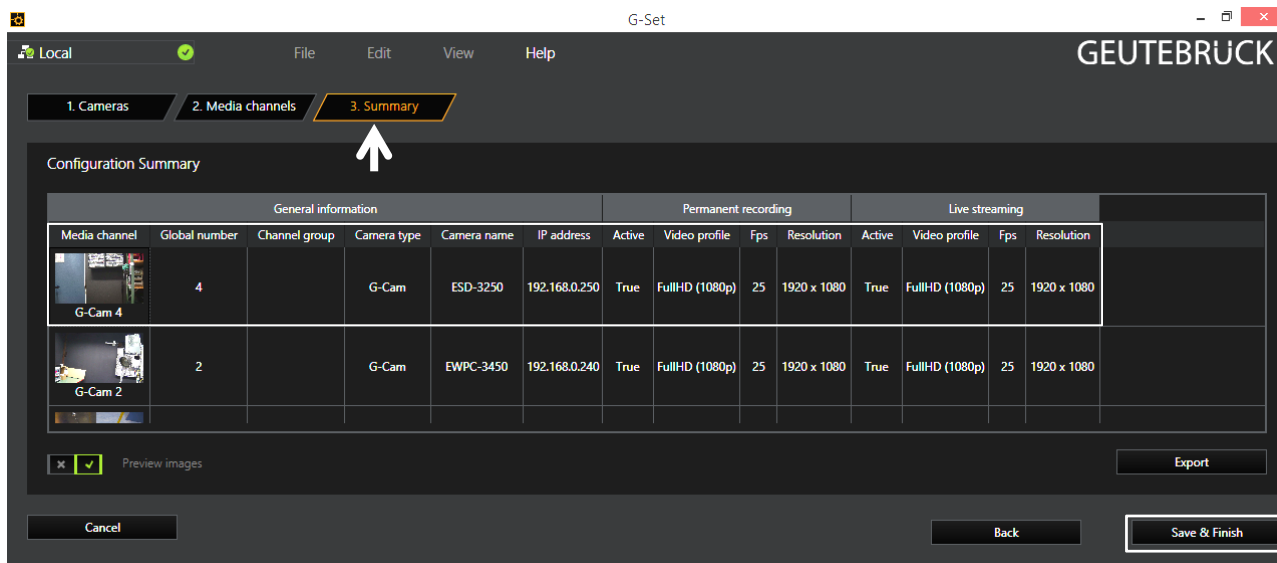
At left column (camera tree) please choose the desired camera.



In the camera menus you can make the desired settings for *Permanent Recording* and *Live Stream*.

Step 3: Summary (check settings, confirm and transfer settings to the server).

Mouse click on tab *Summary* provides you with an overview of all the settings that have been defined for your cameras.

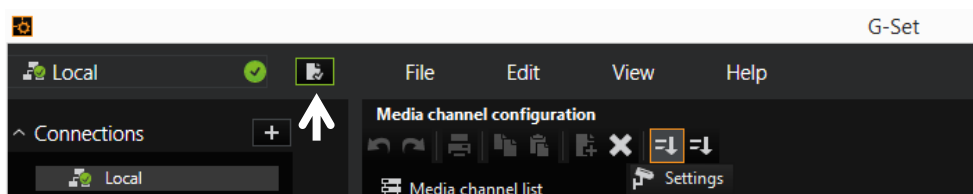


Please confirm your settings by clicking the button *Save & Finish*.

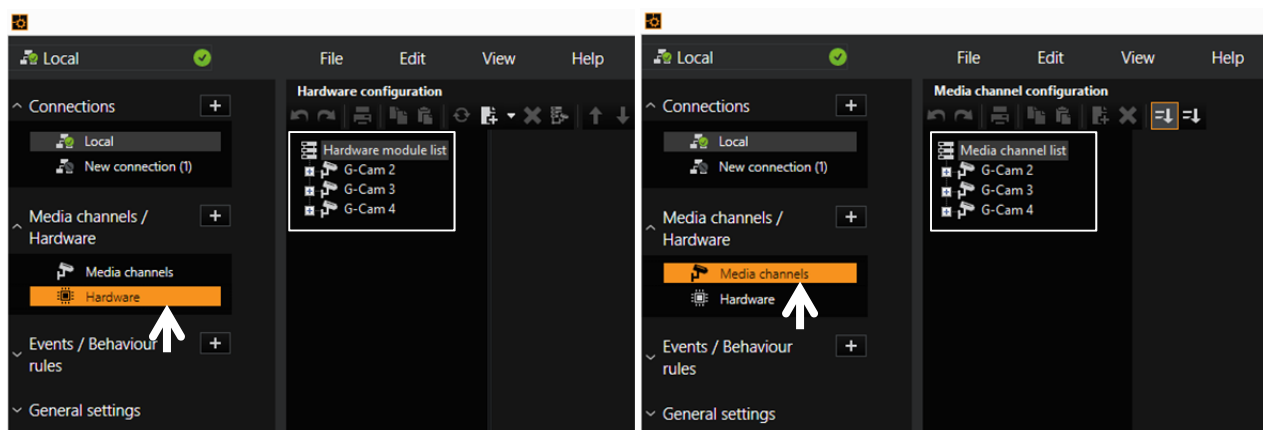


IMPORTANT: For settings to take effect, they **must** be sent to the server by clicking the icon .

You can find the *transfer button* on the *command bar* of G-Set.



Finally, with click at *Hardware* and *Media Channels*, you can check whether the camera is present in the network and the media channels are configured correctly.



Appendix A: Technical Specifications

Image sensor (Chip) / Picture format	1/2,8" Sony Progressive CMOS / 16:9
Video output (permanent)	Composite video: 1 Vpp, 75 Ohm (BNC)
Scanning system	Progressive scan
Mega pixel	2 MP (Full HD)
Minimum sensitivity:	
Color	0,05 Lux (F1,2; Shutter 1/30; 50 IRE) 0,01 Lux (F1,2; Shutter 1/30; 30 IRE)
B/W	0,01 Lux (F1,2; Shutter 1/30; 50 IRE) 0,001 Lux (F1,2; Shutter 1/30; 30 IRE)
Day/Night function	Removable IR cut filter
IR-LEDs and sensor /	IR-LEDs (850 nm; 24 ea)
IR-LED visible range	max. 25 m
Wide Dynamic Range	Shutter Ultra WDR 96 dB
White balance	Automatic / Manual ATW / Indoor / Outdoor
Exposure	Automatic / Manual
Shutter	1 - 1/10,000 s
Slow Shutter	2 Shutter WDR
Back Light Compensation	On/Off
Digitale Noise Reduction	2D/3D (low/middle/high/off)
Text overlay	Yes
Interface	Browser interface
Color / B/W switching	Auto/manual
B/W mode	Yes
Mirror-Function	Flip, Mirror H, 180° Rotation
Portrait/Corridor View	Yes (On/Off); 90° ccw only
Compression	H.264, MJPEG
Picture rate (full resolution)	MJPEG: 50 fps; H.264: 50 fps (not at the same time!)
Resolutions	QCIF up to Full HD
Video Streaming	Dual Stream, configurable
Audio	1x In, 1x Out/G.711, G.726
ONVIF compatible	Yes
Motion detection	Yes
Alarm In/Output	1x In, 1x Out
Browser	Internet Explorer 6.0 and higher, Chrome, Firefox, Safari
Privacy masking	5 adjustable masking zones (8 colors)
Picture Memory	SD slot
Lens	f = 3.0 mm to 9.0 mm (variable)
Auto Focus	Yes (One-Touch-Function)
Angle of view	f = 3,0 mm / 102° (H) x 81° (V), f = 9,0 mm / 36° (H) x 28,5° (V)
Operating temperature	- 40 °C to + 50 °C (w/heater)
Humidity in operation	10 - 90 % rel. humidity (non condensing)
Voltage supply	24 VAC or PoE +
Power consumption	8.0 W (camera) + 2.5 W (LEDs) + 7.0 W (heater)
IP class	IP 66
Connectors	All-in-one-cable: RJ-45 for 10/100 BASE-T Ethernet; Alarm I/O; Audio In/Out; connector for external power supply; BNC connector for permanent analogue video output
Dimensions in mm (diameter x length)	90 x 271.5 (w/sun shield cover)
Weight	Approx. 940 g
Interface standard	ONVIF
Certifications	FCC, CE, RoHS
Licensing	Licence/GSC/IP-Cam (8.31150) required
Optional accessories	G-Cam/EPMA-003 (5.04735) Pole mount adapter
Brand	GEUTEBRÜCK
Order No.	5.04705

Appendix B: Delete the Existing DC Viewer

For users who have installed the DC Viewer in the PC previously, please first remove the existing DC Viewer from the PC before accessing to the IP camera.

Deleting the DC Viewer

In the Windows <Start Menu>, activate <Control Panel>, and then double click on <Add or Remove Programs>. In the <Currently installed programs> list, select <DCViewer> and click on the button <Remove> to uninstall the existing DC Viewer.

Deleting Temporary Internet Files

To improve browser performance, it is suggested to clean up all the files in the Temporary Internet Files. The procedure is as follows.

Step 1: Click on the <Tools> tab on the menu bar and select <Internet Options>.

Step 2: Click on the <Delete> button under <Browsing History> section.

Step 3: In the appeared window, tick the box beside the <Temporary Internet Files> and click on <Delete> to start deleting the files.

Appendix C: Setup Internet Security

If ActiveX control installation is blocked, please either set Internet security level to default or change ActiveX controls and plug-ins settings.

Internet Security Level: Default

Step 1: Start the Internet Explorer (IE).

Step 2: Click on the <Tools> tab on the menu bar and select <Internet Options>.

Step 3: Click on the <Security> tab, and select <Internet> zone.

Step 4: Down the page, click on the <Default Level> button and click on <OK> to confirm the setting. Close the browser window, and restart a new one later to access the IP camera.

ActiveX Controls and Plug-ins Settings

Step 1: Repeat **Step 1 to Step 3** of the previous section above.

Step 2: Down the page, click on the <Custom Level> button to change ActiveX controls and plug-ins settings. The Security Settings window will pop up.

Step 3: Under <ActiveX controls and plug-ins>, set **ALL** items (as listed below) to <Enable> or <Prompt>. Please note that the items vary by IE version.

ActiveX controls and plug-ins settings:

1. Binary and script behaviors.
2. Download signed ActiveX controls.
3. Download unsigned ActiveX controls.
4. Allow previously unused ActiveX controls to run without prompt.
5. Allow Scriptlets.
6. Automatic prompting for ActiveX controls.
7. Initialize and script ActiveX controls not marked as safe for scripting.
8. Run ActiveX controls and plug-ins.
9. Only allow approved domains to use ActiveX without prompt.
10. Script ActiveX controls marked safe for scripting*.
11. Display video and animation on a webpage that does not use external media player.

Step 4: Click on <OK> to accept the settings. A prompt window will appear for confirming the setting changes, click <Yes (Y)> to close the Security Setting window.

Step 5: Click on <OK> to close the Internet Options screen.

Step 6: Close the browser window, and restart a new one later to access the IP camera.

G-Cam/EWPC-3210_IA_EN 27.04.2015



Technical alterations reserved.

GEUTEBRÜCK GmbH

Im Nassen 7-9 | D-53578 Windhagen | Tel. +49 (0)2645 137-0 | Fax-999

E-mail: info@geutebrueck.com | Web: www.geutebrueck.com

00 12:45:00 12:50:00