

GEUTEBRÜCK

Excellence in Video Security

G-Cam/ESD-3160

Full HD Speed-Dome IP Camera

G-Cam/ESD-3270

Full HD Speed-Dome IP Camera



Installation

Preface

The information given in this manual was current when published. The company reserves the right to revise and improve its products. All specifications are subject to change without notice.

Copyright

Under copyright laws, the contents of this user manual may not be copied, photocopied, translated, reproduced or reduced to any electronic medium or machine-readable format, in whole or in part, without prior written permission of the company.

© 2015 by GEUTEBRÜCK All Rights reserved.

Notice



Mounting instructions for Dome Systems and permanently mounted Cameras especially for Pole Mount.

Please note that the place of mounting should be stiff enough to counter strong wind or other vibrations!

Otherwise all VCA functions like Motion Detection, Privacy Masking, etc. either in cameras or with DVRs could be disturbed heavily and can cause unliked and often alarms.

In some cases mechanical problems or defects can be the result of such vibrations, like overheating of focus motors caused by persistent mast shaking!

This manual provides the installation information for the Outdoor 4K UHD Fix Dome IP Camera. To work with the Dome Cameras, any installer or technician must have the following minimum qualifications:

- A basic knowledge of CCTV systems and components
- A basic knowledge of electrical wiring and low-voltage electrical hookups
- A basic knowledge of network system setting
- Have read this manual completely

Important Information

Before proceeding, please read and observe all instructions and warnings in this manual. Retain this manual with the original bill of sale for future reference and, if necessary, warranty service. When unpacking the unit, check for missing or damaged items. If any item is missing, or if damage is evident, DO NOT INSTALL OR OPERATE THIS PRODUCT. Contact the dealer for assistance.

Regulation



This device complies with Part 15 of the FCC Rules. Operation is subject to the following two conditions: (1) This device may not cause harmful interference, and (2) this device must accept any interference received, including interference that may cause undesired operation.



This symbol on the product or on its packaging indicates that this product shall not be treated as household waste in accordance with Directive 2002 / 96 / EC. Instead it shall be handed over to the applicable collection point for the recycling of electrical and electronic equipment. By proper waste handling of this product, please ensure that it has no negative consequences for the environment and human health, which could otherwise be caused if this product is thrown into the garbage bin. The recycling of materials will help to conserve natural resources.

For more details information about recycling of this product, please contact the local city office, household waste disposal service or the shop where purchased the product.



Compliance is evidenced by written declaration from our suppliers, assuring that any potential trace contamination levels of restricted substances are below the maximum level set by EU Directive 2002 / 95 / EC, or are exempted due to their application.

Warnings and Cautions

- **Handle the camera carefully**

Do not abuse the camera. Avoid striking, shaking, etc. The camera could be damaged by improper handling or storage.

- **Installing electricity wiring carefully**

Ask qualified personnel of electrical wiring for the installation. Please note the technical specifications for correct power supply at the end of this manual.

- **Do not disassemble the camera**

To prevent electric shock, do not remove screws or covers. There are no user serviceable parts inside. Ask a qualified service person for servicing.

- **Do not operate the camera beyond the specified temperature, humidity or power source ratings**

Use the camera under conditions which are described in the technical specifications.

- **Do not use strong or abrasive detergents when cleaning the camera body**

Use a dry cloth to clean the camera when it is dirty. In case the dirt is hard to remove, use a mild detergent and wipe the camera gently.

- **Never face the camera towards the sun**

Do not aim the camera at bright objects. Whether the camera is in use or not, never aim it at the sun or other extremely bright objects. Otherwise, the camera may be smeared or damaged.



Mounting instructions for Cameras especially for Pole Mount.

Please note that the place of mounting should be stiff enough to counter strong wind or other vibrations!

Otherwise all VCA functions like Motion Detection, Privacy Masking, etc. either in cameras or with DVRs could be disturbed heavily and can cause unliked and often alarms.

In some cases mechanical problems or defects can be the result of such vibrations, like overheating of focus motors caused by persistent mast shaking!

Table of Contents

Preface	1
Regulation	2
Warnings and Cautions	3
1. Introduction	5
2. Standard Package Contents	5
2.1 Camera Dimensions	7
3. Camera Cable Connections	8
3.1 Switch / Connector Definition	8
3.2 Cable Requirements	9
3.2.1 Power Connection	10
3.2.2 Ethernet Cable Connection	10
3.2.3 Alarm I/O Connection	11
3.2.4 Audio I/O Connection	11
4. System Requirements	11
5. Access Camera	12
5.1 Setup Video Resolution	15
5.2 Configuration Files Export / Import	16
5.3 Delete the Existing DC Viewer	16
5.4 Setup Internet Security	17
5.5 Commissioning in GEUTEBRÜCK Software	18
5.5.1 Commissioning of IP Cameras in GSC-Setup	18
5.5.2 Commissioning of IP Cameras in G-Set	23
6. Dome Camera Installation and Accessories	27
6.1 Optional Accessories	28
6.2 Ceiling Mount	33
6.2.1 Hard Ceiling Mounting	33
6.2.2 In-Ceiling (T-Bar) Mounting	35
6.2.3 Ceiling Mounting with Indoor Mounting Kit	38
6.2.4 Ceiling Mounting with Straight Tube	40
6.3 Wall Mount	42
6.3.1 Compact Pendant Mount	42
6.3.2 Standard Pendant Mount	44
6.4 Corner Mount	46
6.4.1 Corner Standard Mounting Plate	46
6.5 Pole Mount	48
6.5.1 Pole Thin / Wide Direct Mounting	48
Appendix A Technical Data	50
Appendix B Video Resolutions	52

1. Introduction

The Full HD Speed Dome IP Camera is designed to deliver superb performance and durability with an intelligent and stylish housing that is suitable in any security and surveillance installation.

There will be a PE cloth sheet covered inside the dome cover and a lens cap on the lens for shipping protection. Follow the steps below to remove those protective materials.

Step 1: Unpack the dome package and take out the dome body.

Step 2: Rotate and remove the protective cover.

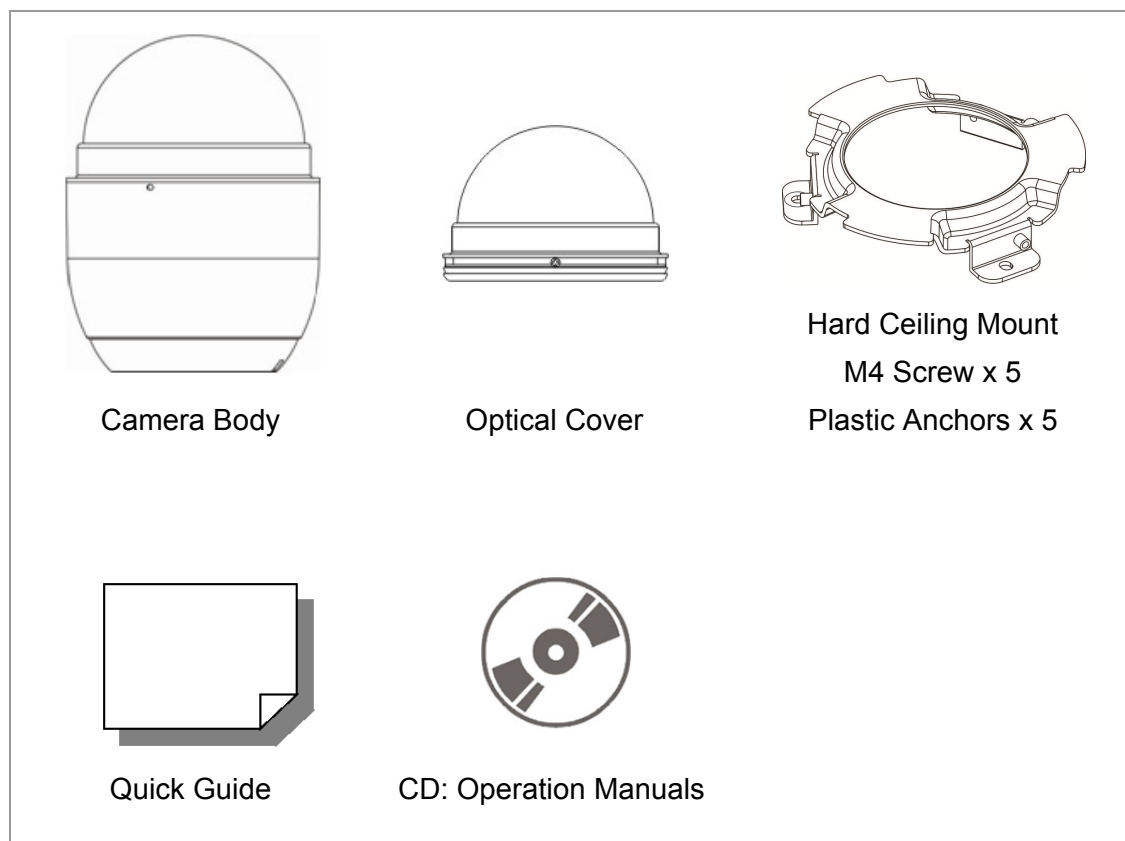
Step 3: Remove the PE cloth sheet and take off the lens cap.

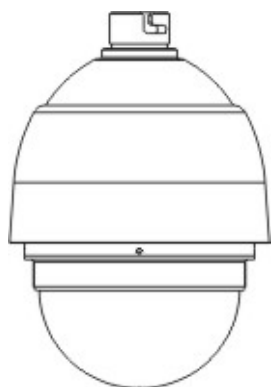
Step 4: Attach the dome cover to the dome body.

2. Standard Package Contents

Before proceeding, please check the box contains the items listed here. If any item is missing or has defects, DO NOT install or operate the product and contact dealer for assistance.

Indoor Model

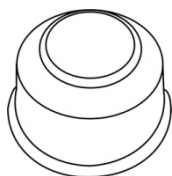


Outdoor Model

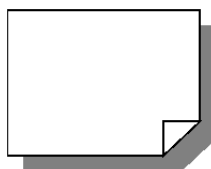
Camera Body with
Outdoor Mount Kit



M3 Standard Screw x 1
M3 Security Screw x 1*
M5 Standard Screw x 1
M5 Security Screw x 1*



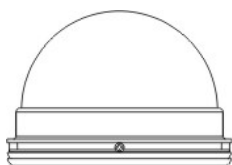
Waterproof Rubber



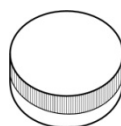
Quick Guide



CD: Operation Manuals



Optical Cover



Lubricant

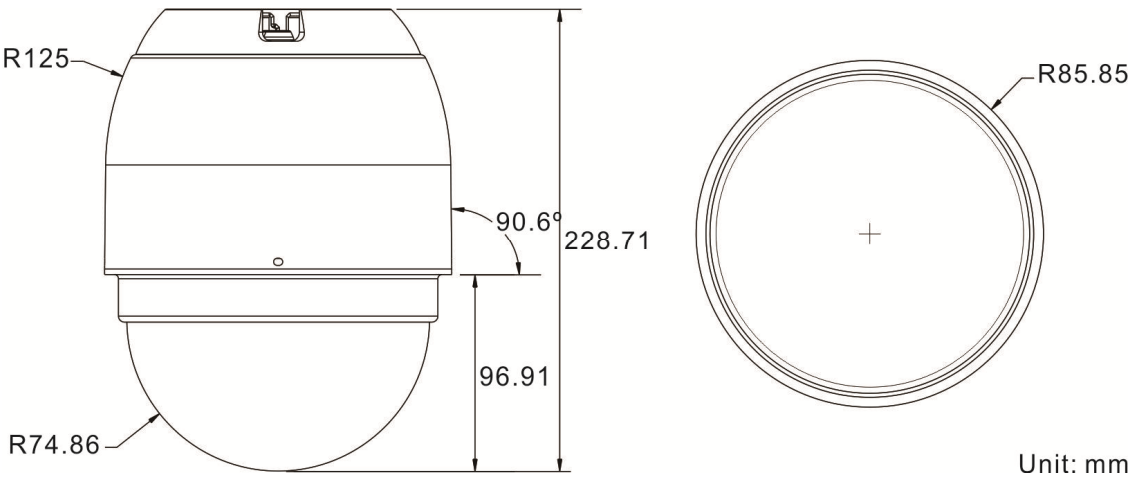


Security Torx*

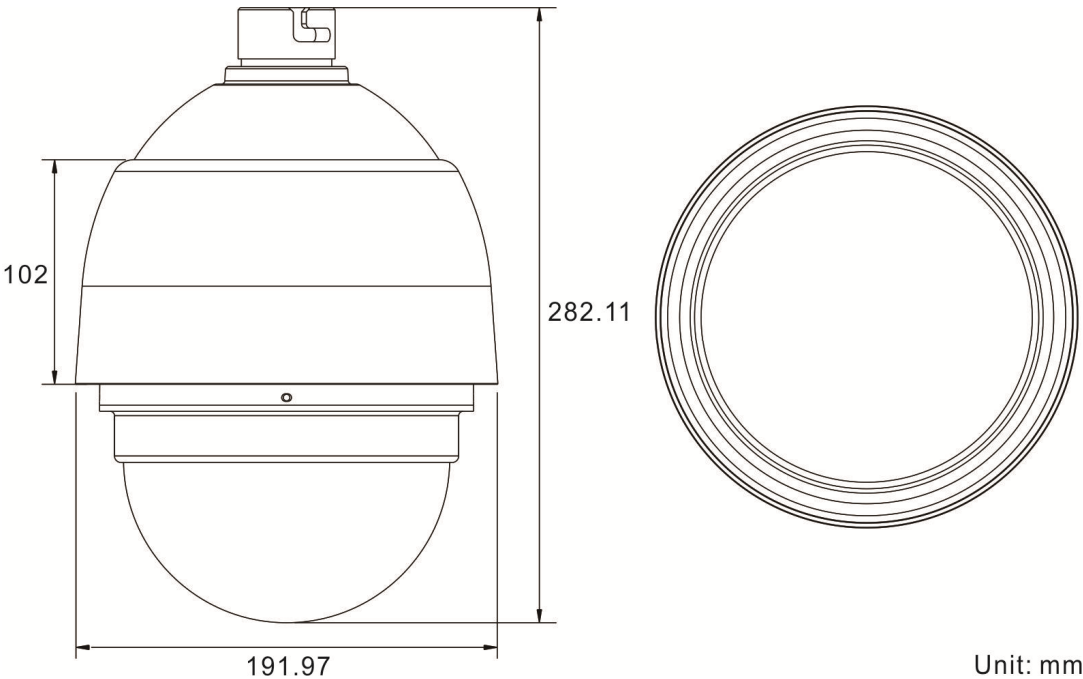
*Optional: For Vandal Proof Cover only.

2.1 Camera Dimensions

Indoor



Outdoor

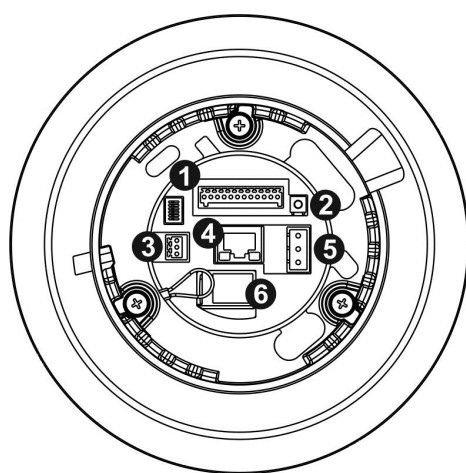


3. Camera Cable Connections

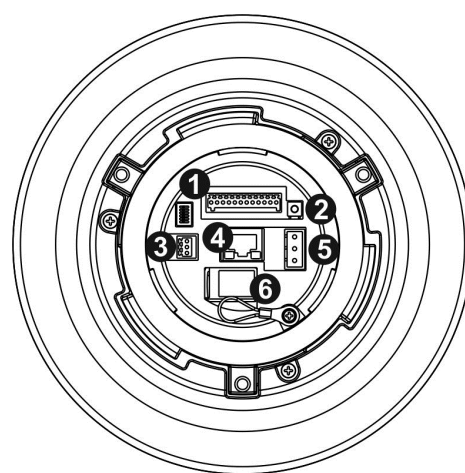
Before installing or connecting the Dome Camera, please refer to this section and complete preparations for dome setups and various switch settings.

3.1 Switch / Connector Definition

There are various connectors located on the Dome Camera's back plate as shown in the figures below. Please refer to the diagrams and tables accompanied with for use of each switch / connector.



Indoor



Outdoor

Pin	Connector	Definition
1	Alarm I/O	Alarm I/O connection
2	Default Button	Press the button with one figure for at least 20 seconds to restore the system.
3	Audio I/O	Audio I/O connection GEUTEBRÜCK supports only Line In
4	RJ-45	For network and PoE+ connections
5	Power	Power connection
6	microSD Card Slot	Insert the microSD card into the card slot to store videos and snapshots. Do not remove the microSD card when the camera is powered on.



NOTE: It is not recommended to record with the microSD card for 24/7 continuously, as it may not be able to support long term continuous data read/write. Please contact the manufacturer of the microSD card for information regarding reliability and life expectancy.

3.2 Cable Requirements

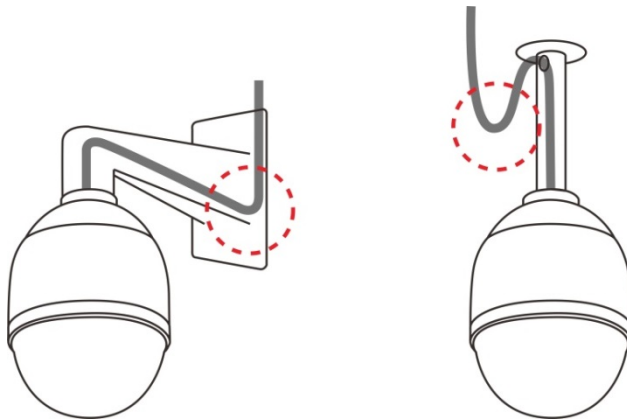
For operation, the Network Speed Dome IP Camera requires power cable and RJ-45 cable as described below.

For indoor models, please refer to the following sections to connect cables. For outdoor models, please read the notice below first, and then refer to the following sections for cable connections.

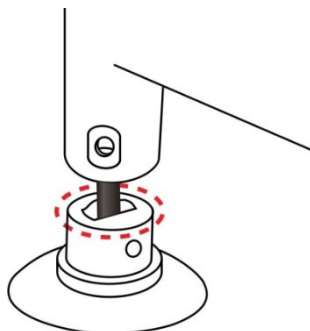
Notice for Outdoor Models

The outdoor models are being IP66-rated to prevent water from entering the camera. However, water might still enter the camera if it is being improperly installed. Please make sure the warnings below are strictly followed when installing the camera.

- Place all cables and the adaptor in dry and well-waterproofed environments, e.g. waterproof boxes. The purpose is to prevent moisture accumulation inside the camera and moisture penetration into cables.
- While running cables, slightly bend the cables to a U-shaped curve to make a low point (as demonstrated in the figures below). The purpose is to prevent water from entering the camera along the cables from above.

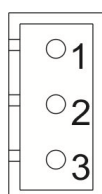


- The cable entry hole of the outdoor mounting kit (indicated in the figure below) needs to be sealed to avoid water from entering the camera.



3.2.1 Power Connection

To power up the camera, connect the AC 24V power adaptor to the power connector of the camera and the power outlet. Please refer to the diagram and the pin definition table below for connection. Alternatively, users can use High Power over Ethernet (for Outdoor HighPoE, for Indoor PoE+) to power up the camera. Refer to the section below for Ethernet cable connection.



Pin	Definition
1	AC 24_1 / 24 VDC (+)
2	FG
3	AC 24_2 / 24 VDC (-)



Caution! Never use PoE and power adaptor at same time!

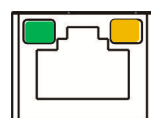
3.2.2 Ethernet Cable Connection

Use of Category 5 Ethernet Cable is recommended for network connection; to have best transmission quality, cable length shall not exceed 100 meters. Connect one end of the Ethernet Cable to the RJ-45 connector of the Network Speed Dome Camera, and the other end of the cable to the network switch or PC.



NOTE: In some cases, users may need an Ethernet crossover cable when connecting the Network Speed Dome Camera directly to the PC.

Check the status of the link indicator and activity indicator LEDs; if the LEDs are unlit, please check LAN connection.

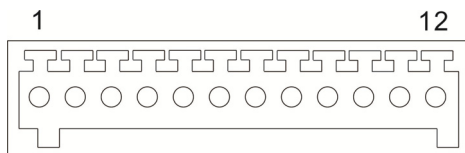


Green Link Light indicates good network connection.

Orange Activity Light flashes for network activity indication.

3.2.3 Alarm I/O Connection

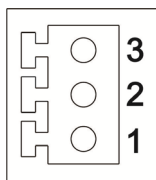
The camera supports 4 digital alarm inputs and 2 digital alarm outputs. Please refer to the diagram and the pin definition tables below for alarm I/O connection.



Pin	Definition	Pin	Definition
1	Alarm Out NO 1	7	Alarm Out COM 2
2	Alarm Out NC 1	8	GND
3	Alarm Out COM 1	9	Alarm In 4
4	GND	10	Alarm In 3
5	Alarm Out NO 2	11	Alarm In 2
6	Alarm Out NC 2	12	Alarm In 1

3.2.4 Audio I/O Connection

Please refer to the diagram and the pin definition table below for audio I/O connection.



Pin	Definition
1	Audio Out
2	GND
3	Audio In

GEUTEBRÜCK DVR only support Audio In.

4. System Requirements

To perform the camera via web browser, please ensure the PC is in good network connection, and meet the system requirement as described below.

Items	Minimum Requirement
Personal Computer	1. Intel® Pentium® IV, 3 GHz or higher, Intel® Core2 Duo, 2 GHz or higher 2. 1 GB RAM or more 3. AGP graphics card 64 MB RAM, DirectDraw
Operating System	Windows VISTA / Windows XP / Windows 7
Web Browser	Internet Explorer 6.0 or later, Firefox, Chrome, Safari
Network Card	10Base-T (10 Mbps) or 100Base-TX (100 Mbps) operation
Viewer	ActiveX control plug-in for Microsoft IE

5. Access Camera

For initial access to the IP camera, users can search the camera through the installer program: DeviceSearch.exe, which can be found in “DeviceSearch” folder in the supplied CD.

Accessing the Camera by Device Search Software

Step 1: Double click on the program Device Search.exe.

Step 2: After its window appears, click on the <Device Search> button on the top. All the finding IP devices will be listed in the page.

Step 3: The default IP configuration is **DHCP**. If no DHCP server is in network, the camera sets itself to the address **192.168.0.250**.

This IP address may not be in the same LAN as the IP address of the PC. If so, the IP address of the camera needs to be changed. Right click on the camera and click <Network Setup>.

The <Network Setup> page will come out. Select <DHCP> and click <Apply> down the page. The camera will be assigned with a new IP address.

Click <OK> on the Note of setting change. Wait for one minute to re-search the camera. Meanwhile, record the MAC address of the camera, for future identification.

Step 4: Click on the <Device Search> button to re-search all the devices. Find the camera in the list by its MAC address. Then double click or right click and select <Browse> to access the camera directly via a web browser.

Step 5: A prompt window requesting for default username and password will appear. Enter the default username and password shown below to login to the camera.

Login ID	Password
root	admin



NOTE: ID and password are case sensitive.



NOTE: It is strongly advised that administrator's password be altered for the security concerns. Refer to the Hyper IP Camera Menu Tree in the supplied CD for further details.

Installing Viewer Software Online

For the initial access to the IP camera, a client program, Viewer, will be automatically installed to the PC when connecting to the camera.

If the web browser doesn't allow Viewer installation, please check the Internet security settings or ActiveX controls and plug-ins settings (**refer to** section [Setup Internet Security](#)) to continue the process.

The Information Bar (just below the URL bar) may come out and ask for permission to install the ActiveX Control for displaying video in browser. Right click on the Information Bar and select <Install ActiveX Control...> to allow the installation.

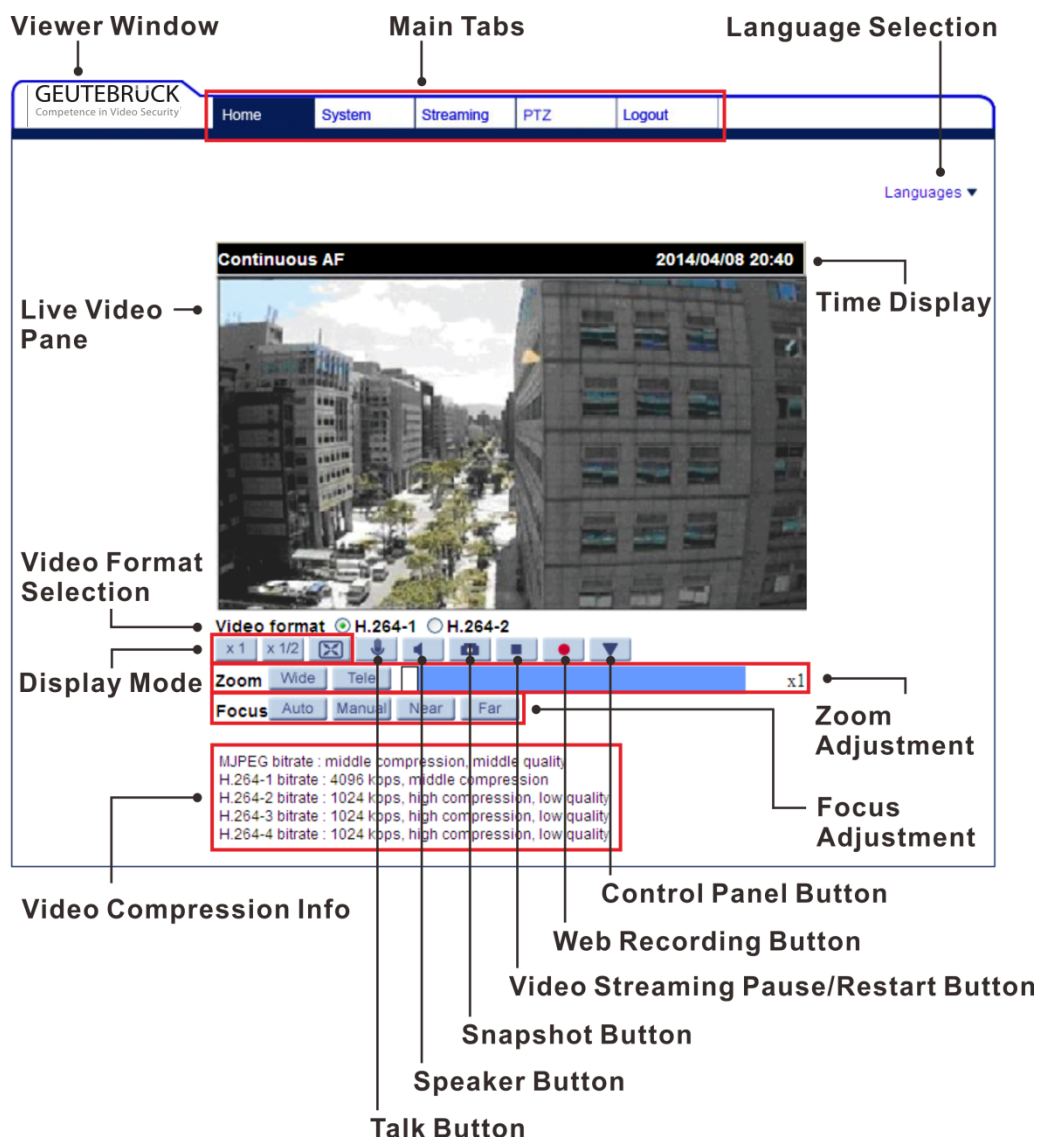
The download procedure of Viewer software is specified as follows.

Step 1: In the Viewer installation window, click on <Next> to start installation.

Step 2: The status bar will show the installation progress. After the installation is completed, click on <Finish> to exit the installation process.

Step 3: Click on <Finish> to close the Viewer installation page.

Once the Viewer is successfully installed, the Home page of the IP camera will be shown as the figure below.



Zoom and Focus Adjustment

The live image will be displayed on the Home page when the camera is successfully accessed. If zoom or focus is not at the desired position, please use the function buttons on the Home page for adjustment. Refer to the [Camera Webbrowser Manual](#) in the supplied CD for more details about the function buttons.

5.1 Setup Video Resolution

Users can setup video resolution on Video Format page of the user-friendly browser-based configuration interface.

Video Format can be found under this path: **Streaming> Video Format**.

GEUTEBRUCK
Competence in Video Security

Home System **Streaming** PTZ Logout

Video Format

Video Compression
Video OCX Protocol
Video Frame Rate
Audio

Video Resolution :

H.264 + H.264 + H.264 + H.264

H.264-1 format : 1920 x 1080 (15 fps)

H.264-2 format : 1280 x 1024 (15 fps)

H.264-3 format : 1280 x 720 (15 fps)

H.264-4 format : 720 x 480 (15 fps)

Save

Note :
Image attachment by FTP or E-mail will be available only while MJPEG streaming is selected.

Text Overlay Settings :

☐ Include date ☐ Include time

☐ Include text string:

Save

Video Rotate Type :

Normal video

Save

GOV Settings :

H.264-1 GOV Length : 60 H.264-2 GOV Length : 60

H.264-3 GOV Length : 30 H.264-4 GOV Length : 30

Save

H.264 Profile :

H.264-1 : Main profile H.264-2 : Main profile

H.264-3 : Main profile H.264-4 : Main profile

The default value of the video resolution is as below.

2M	H.264- 1920 x 1080 (30 fps) + H.264- 720 x 480 (30 fps)
-----------	---

For more details about the combinations of video resolution, please refer to the Camera Webbrowser Manual in the supplied CD.

5.2 Configuration Files Export / Import

To export / import configuration files, users can access the Maintenance page on the user-friendly browser-based configuration interface.

The Maintenance setting can be found under this path: **System> Maintenance**.

Users can export configuration files to a specified location and retrieve data by uploading an existing configuration file to the camera. It is especially convenient to make multiple cameras having the same configuration.

Export

Users can save the system settings by exporting the configuration file (.bin) to a specified location for future use. Click on the <Export> button, and the popup File Download window will come out. Click on <Save> and specify a desired location for saving the configuration file.

Upload

To upload a configuration file to the camera, click on <Browse> to select the configuration file, and then click on the <Upload> button for uploading.

5.3 Delete the Existing DC Viewer

For users who have installed DC Viewer in the PC previously, please remove the existing DC Viewer before accessing the IP camera.

Deleting the DC Viewer

In the Windows <Start Menu>, activate <Control Panel>, and then double click on <Add or Remove Programs>. In the <Currently installed programs> list, select <DCViewer> and click on the button <Remove> to uninstall the existing DC Viewer.

Deleting Temporary Internet Files

To improve browser performance, it is suggested to clean up all the files in the <Temporary Internet Files>. The procedure is as follows.

Step 1: In the web browser, click on the <Tools> tab on the menu bar and select <Internet Options>.

Step 2: Click on the <Delete> button under the <Browsing History> section.

Step 3: In the appeared window, tick the box beside <Temporary Internet Files> and click on <Delete> to start deleting the files.

5.4 Setup Internet Security

If ActiveX control installation is blocked, please either set Internet security level to default or change ActiveX controls and plug-ins settings.

Internet Security Level: Default

Step 1: Start the Internet Explorer (IE).

Step 2: Click on the <Tools> tab on the menu bar and select <Internet Options>.

Step 3: Click on the <Security> tab, and select <Internet> zone.

Step 4: Down the page, click on the <Default Level> button and click on <OK> to confirm the setting. Close the browser window and restart a new one later to access the camera.

ActiveX Controls and Plug-ins Settings

Step 1: Repeat **Step 1 to Step 3** of the previous section above.

Step 2: Down the page, click on the <Custom Level> button to change ActiveX controls and plug-ins settings. The Security Settings window will pop up.

Step 3: Under <ActiveX controls and plug-ins>, set **ALL** items (as listed below) to <Enable> or <Prompt>. Please note that the items vary by IE version.

ActiveX controls and plug-ins settings:

1. Binary and script behaviors.
2. Download signed ActiveX controls.
3. Download unsigned ActiveX controls.
4. Allow previously unused ActiveX controls to run without prompt.
5. Allow Scriptlets.
6. Automatic prompting for ActiveX controls.
7. Initialize and script ActiveX controls not marked as safe for scripting.
8. Run ActiveX controls and plug-ins.
9. Only allow approved domains to use ActiveX without prompt.
10. Script ActiveX controls marked safe for scripting*.
11. Display video and animation on a webpage that does not use external media player.

Step 4: Click on <OK> to accept the settings. A prompt window will appear for confirming the setting changes, click <Yes(Y)> to close the Security Setting window.

Step 5: Click on <OK> to close the Internet Options screen.

Step 6: Close the browser window, and restart a new one later to access the IP camera.

5.5 Commissioning in GEUTEBRÜCK Software



Attention: To install the IP cameras correctly, the software must be:

- **GeViScope/re_porter** **Version 7.5.960.11** or higher
- **G-Scope** **Version 1.1.3.38** or higher

Older Software must be updated. Please download at:
www.geutebrueck.com

5.5.1 Commissioning of IP Cameras in GSC-Setup

The following steps are required:

- The IP cameras must be assigned an IP address and a function package.
- Adding and configuring of the media channels.
- Proof of the dome functions in Telecontrol.

Following this, the connected IP domes are available in the GeViScope / re_porter.

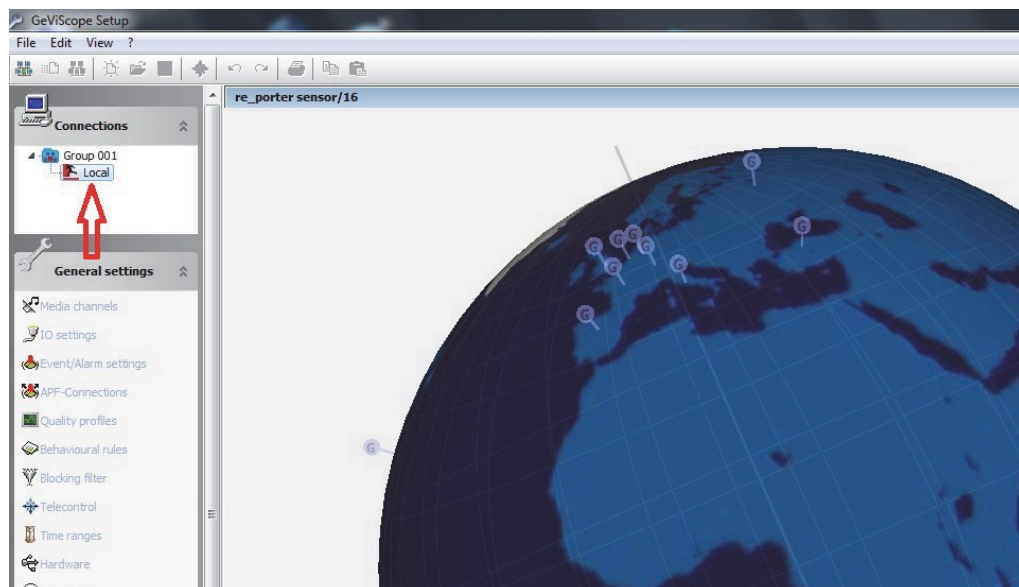
Adding of the E3 IP-cameras

Open the GeViScope setup menu by double-clicking the desktop icon




Step 1: Connect the GeViScope to a server in the Connections menu.

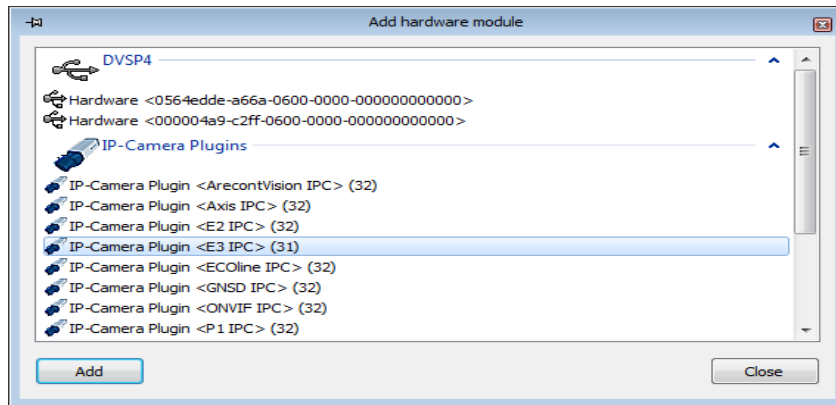
Step 2: Click the left mouse button to open the General Settings menu.



Click the menu item for Hardware in the General Settings menu.


The context menu is opened by clicking the  [Add] button.

In the list that appears, please select the E3 IP camera that you would like to add.



Confirm the selection by clicking **Add**.

The additional IP camera now appears in the hardware module list.

Click the icon  to send the settings to the server.

Select the IP camera that must be configured.

Choose the IP camera settings tab and assign an available IP-address.

Installation information for IP address configuration:

IP domes use static IP addresses. Therefore, the IP address of the GeViScope must have an IP address from the same IP subnet as the IP dome device.

a) Static IP address

GeViScope is assigned a fixed static IP address with the same IP subnet as the IP dome. This is the preferred configuration for a GeViScope that uses IP dome devices.

b) 2 network cards

As an alternative to a) a second network card can be installed in the GeViScope. This makes a dual operation of DHCP and static IP possible. Communication with the IP dome devices is carried out over the second network card that is configured with a static IP address as in a).

c) DHCP Modus

A GeViScope that runs in DHCP mode must be assigned, by the DHCP server, either a static IP

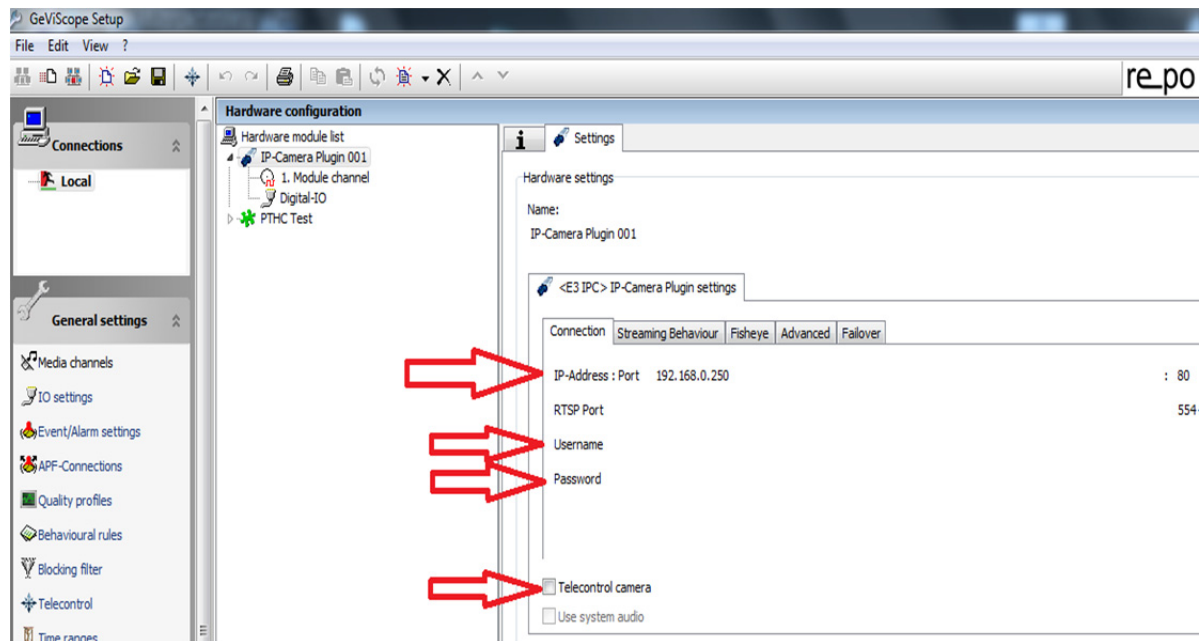
address or an IP address from the same IP subnet as the IP dome devices.

To power up the Camera, please connect the Ethernet cable to the Camera's Ethernet Port and plug the other end of the cable into an IEEE 802.3at High

Power over Ethernet (HighPoE) Switch. If there is a need to operate the Heater for Outdoor Models, please plug the AC 24V cable into the Camera's Power Connector to power up the Camera instead. •




Attention: A loss of the connection to the DHCP server can cause the connection loss to the IP dome devices! This operating mode should only be used if a continuous connection to the DHCP server is ensured!



Please insert the username “**root**” and password “**admin**”.

Activate the **Telecontrol camera** button, if you want to integrate an IP camera with motorized lens (Zoom and focus remote controlled) or of type EHC.

This activation configures automatically all needed parameters in the Telecontrol menu.

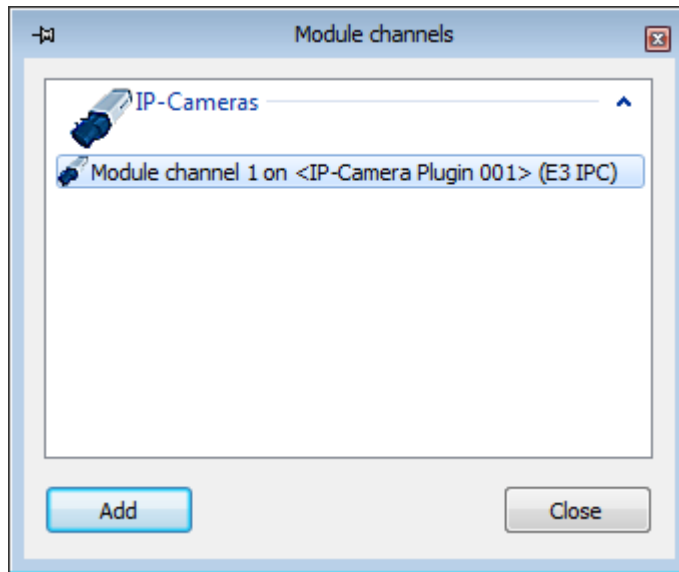
When you have checked all the settings yet again, click the  icon to send the settings to the server.

Adding and configuring media channels

On the General settings menu, click Media channels in order to initialize the media settings. The media channels of the basic unit are displayed.

The context menu is opened by clicking the „Add“ button.

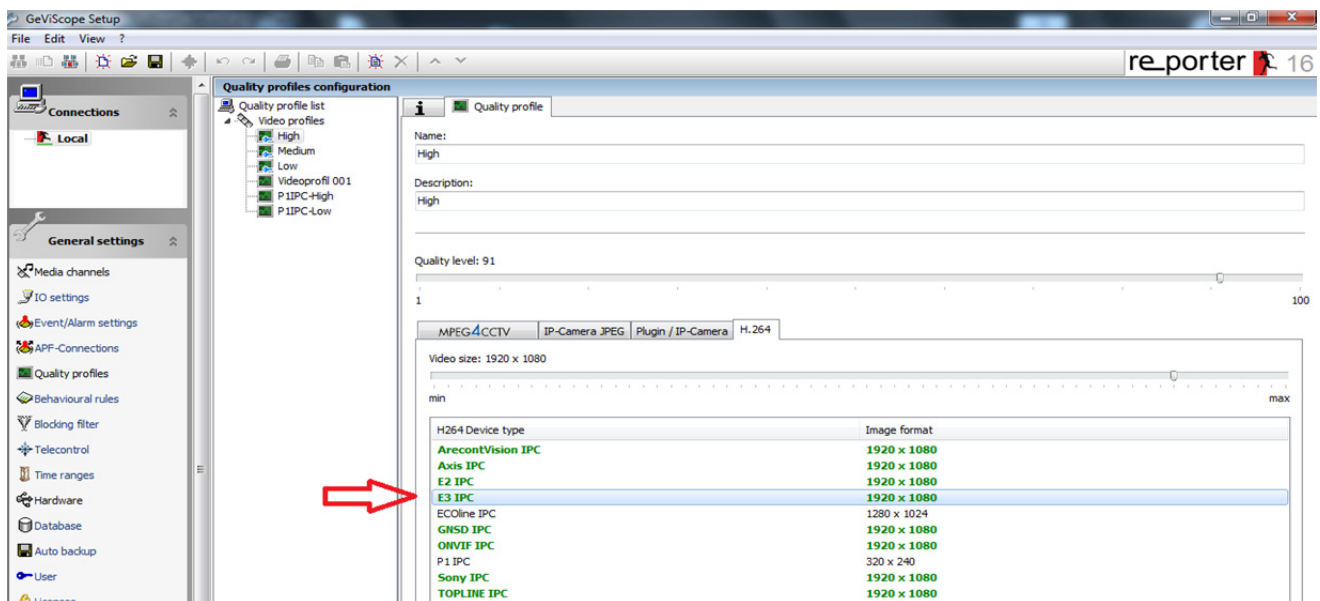
Please select the channels that you would like to add from the list that appears.




Confirm the input by clicking **Add**.

The compression format is automatically set to H.264.

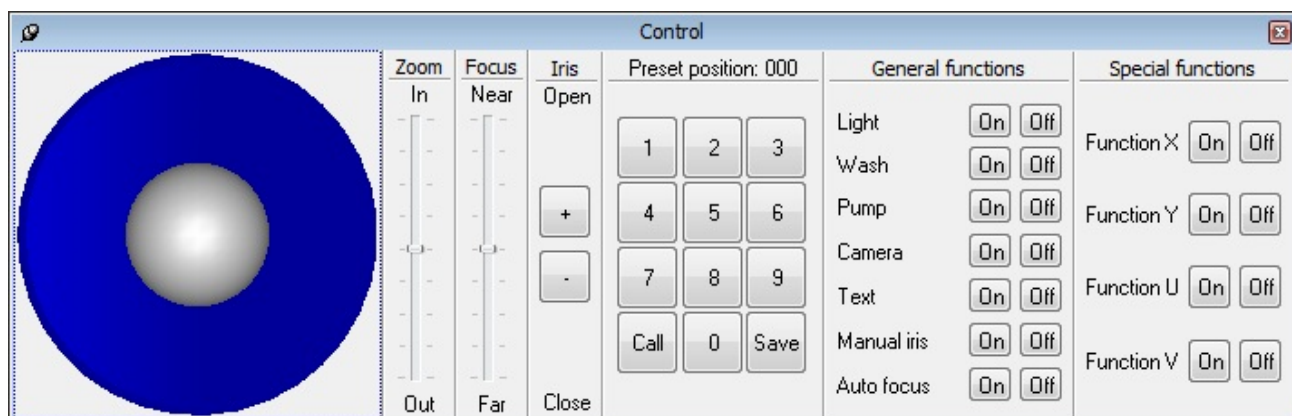
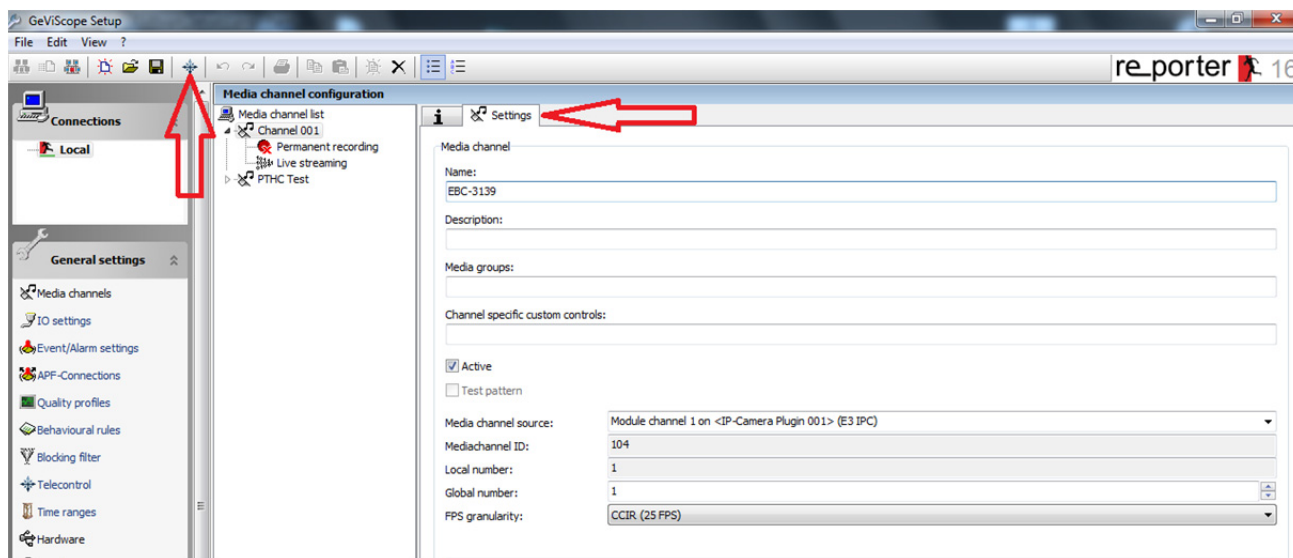
You only should control the image quality in the menu Quality profile. Move the slider till the image format of the chosen plugin type changes to green.



When you have checked all the settings yet again, click the  icon to send the settings to the server.

Please click on tab **Media channels** → folder **Settings** → **Telecontrol** button to check the correct Telecontrol functions with joystick and sliders.

This function is only available for cameras, which have a motorized lens (Zoom and focus remote controlled).



5.5.2 Commissioning of IP Cameras in G-Set

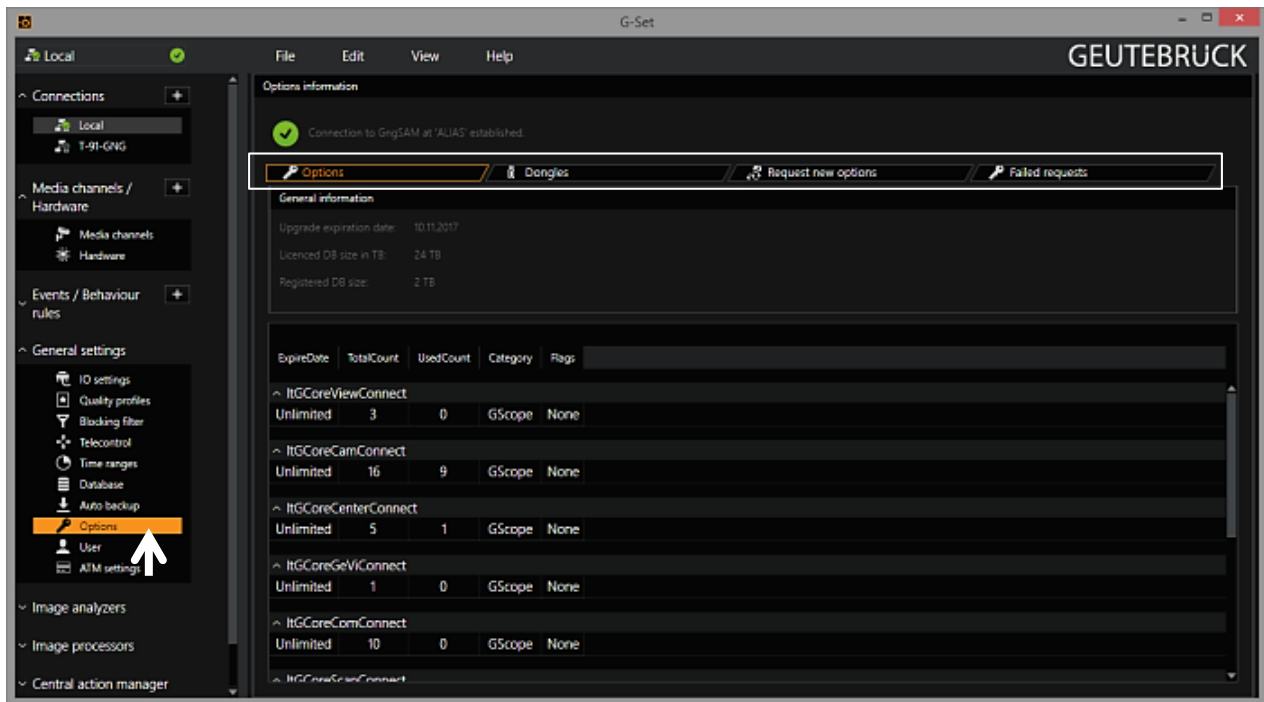


NOTE: For correct installation of IP cameras one **Option G-Core/CamConnect** must be available for each camera.

Available options are shown in G-Set at *General settings - Options*.

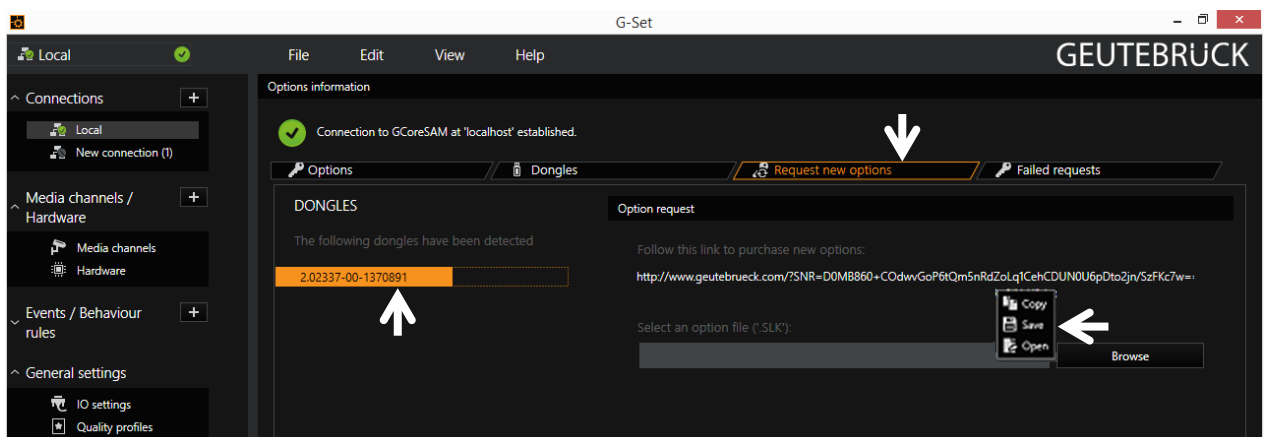
Required options can be ordered using *General settings - Options* in G-Set.

After clicking on *Options*, the options dialog opens with the first tab, which shows an overview of the available options.



The dialog shows the four tabs *Options*, *Dongles*, *Request new options* and *Failed requests*.

Request new options




New options can be requested using this dialog. When you click the dongle that will be assigned the new options, an URL appears in the field *Follow this link to purchase new options*.

Right clicking this URL opens a menu in which the URL can be copied, saved or opened in the default browser.

After passing the URL to a browser, follow the instructions on the GEUTEBRÜCK website.

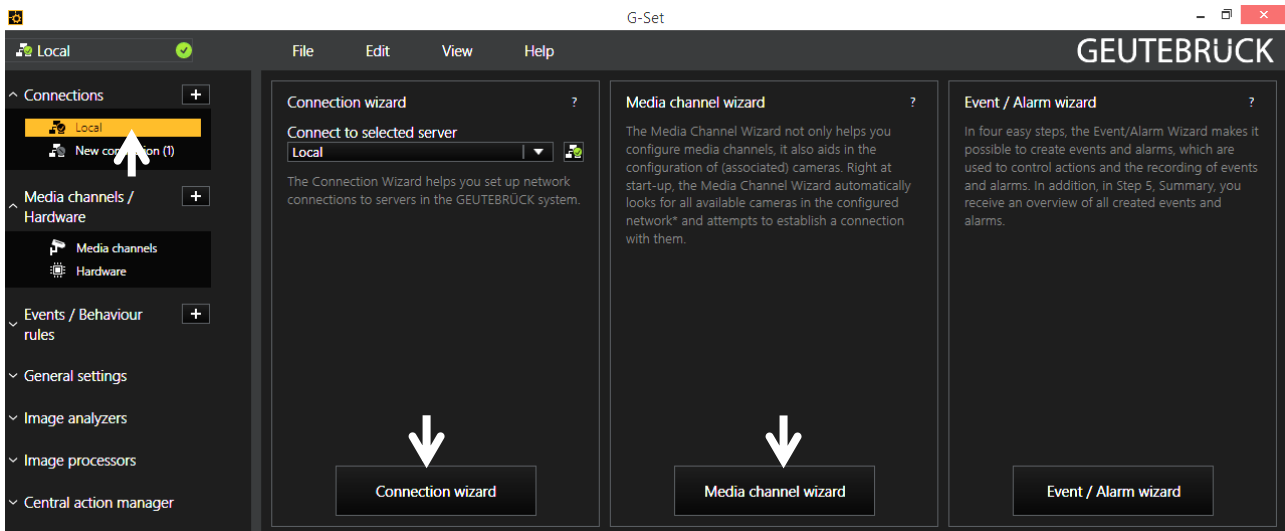
Adding IP Cameras

Please double click at desktop on the G-Set icon  to open the G-Set configuration menu.

Step 1: Connection to a server

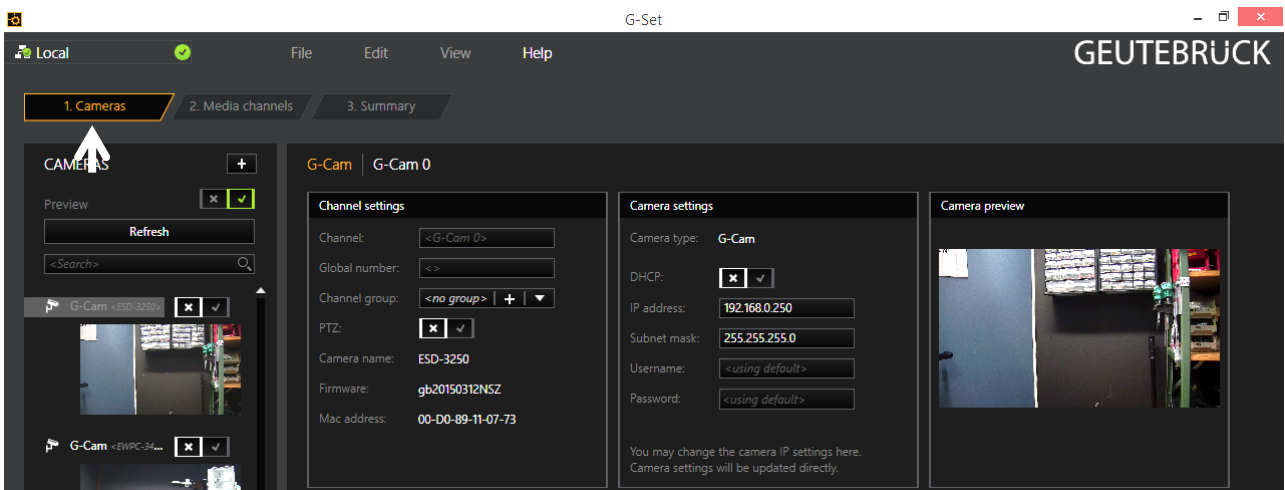
To connect G-Core with a (local or remote) server,

- Double-click on a connection available under *Connections* in the selection menu or
- In the Connection wizard dialog select a server from the list and click on the icon.
- By clicking *Connection wizard*, you can also configure new server connections.



Step 2: Activation and configuration of Media channels.

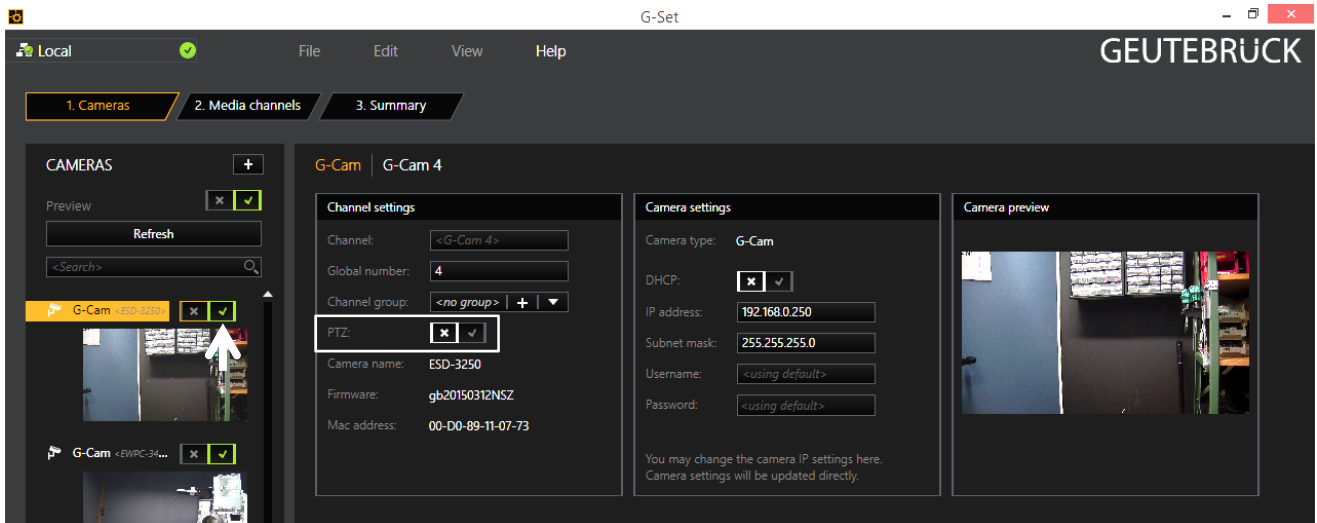
Left mouse click at *Media channel wizard* and click on tab *Cameras* opens the following window:



The Media Channel Wizard automatically searches for existing network cameras and displays them in the first column.

Cameras for which access rights are available are also displayed with a small camera image.

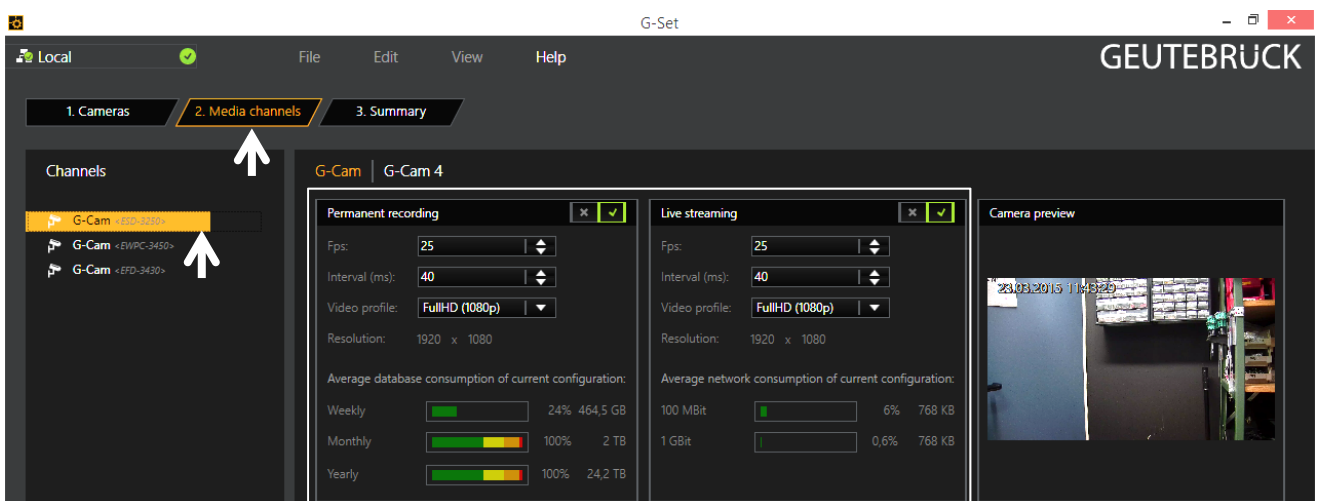
You can now select the desired camera by clicking the tick box (changes to green) and edit the general information and the camera-specific data.



NOTE: If you want to control a PTZ camera, the **tick box PTZ** in the menu *Channel Settings* **must** be activated.

Left click on the tab *Media channels* opens the configuration window.

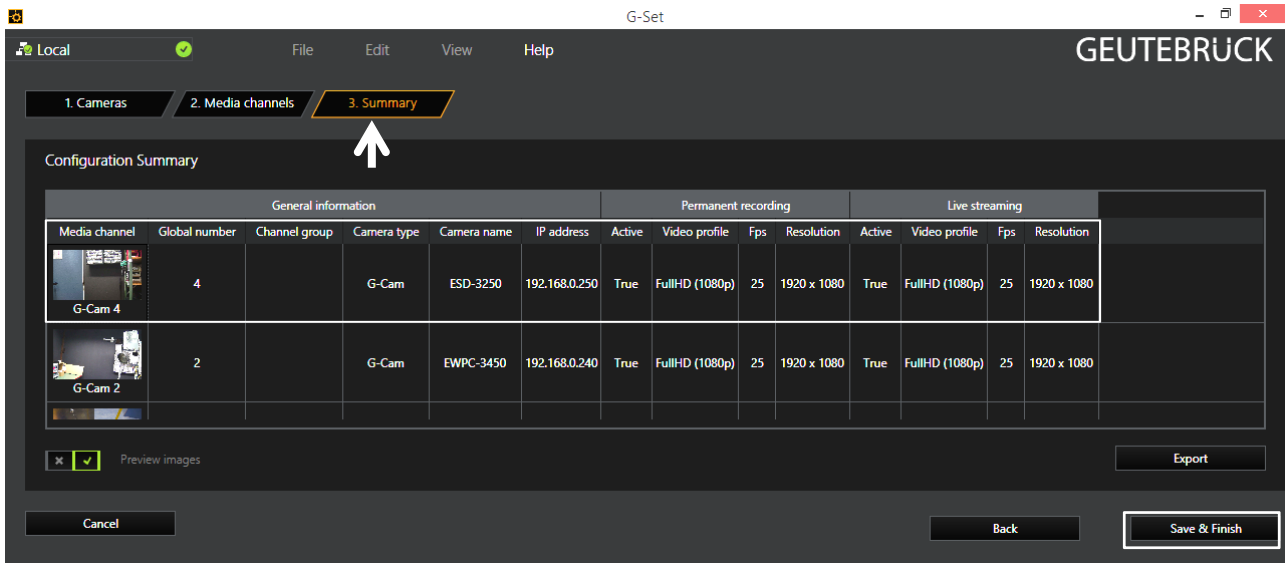
At left column (camera tree) please choose the desired camera.



In the camera menus you can make the desired settings for *Permanent Recording* and *Live Stream*.

Step 3: Summary (check settings, confirm and transfer settings to the server).

Mouse click on tab *Summary* provides you with an overview of all the settings that have been defined for your cameras.

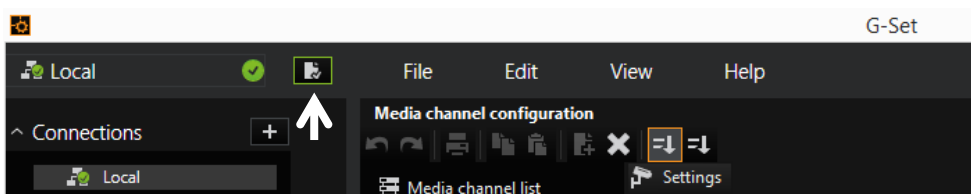


Please confirm your settings by clicking the button *Save & Finish*.

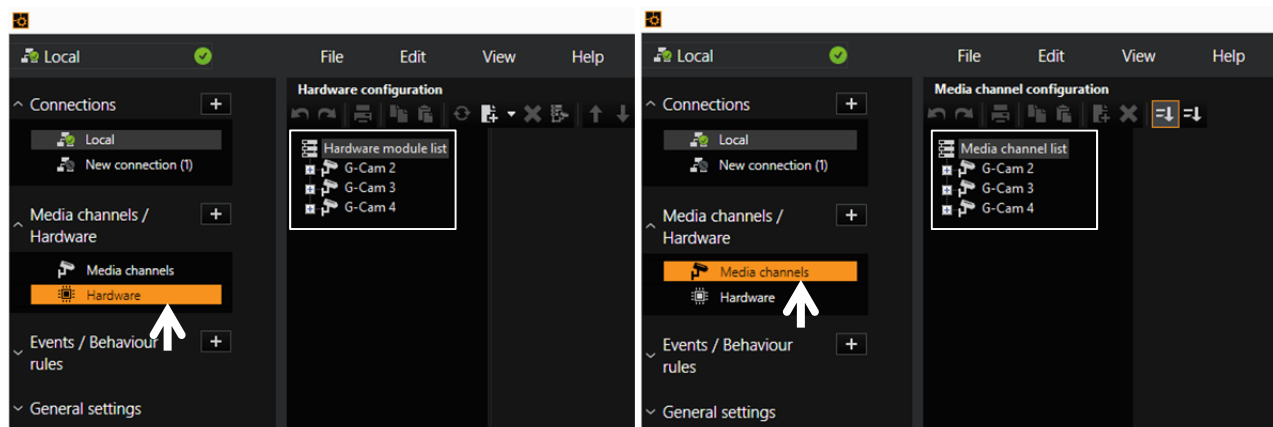


IMPORTANT: For settings to take effect, they **must** be sent to the server by clicking the icon .

You can find the *transfer button* on the *command bar* of G-Set.



Finally, with click at *Hardware* and *Media Channels*, you can check whether the camera is present in the network and the media channels are configured correctly.



G-Cam/ESD-3160 + G-Cam/ESD-3270

Full HD Speed Dome IP Camera

Accessories and Installation

Indoor / Outdoor

6. Dome Camera Installation

Basing on user's installation environments, the Dome Camera can be installed on ceiling, on wall or on pole. In the following sections, various Dome Camera installation accessories, installation methods and installation procedures will be described in detail.

6.1 Optional Accessories

The following chapters describe the available accessories for dome installation.

Dome Camera Accessories

Transparent / Vandal Proof Cover

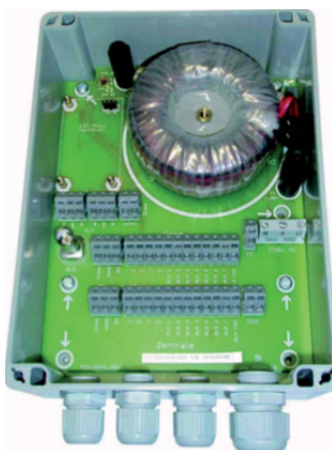


Transparent Cover (Standard)

Vandal Proof Cover (Optional)

Power Supply PSU-24VAC/80VA/Boxed Order-No.: 5.14040

24 V AC / 80 W mains (recommended for outdoor use)



Power Adapter HL50/24 Order-No.: 5.03080

24 V AC / 50 W mains unit for operation of the GEUTEBRÜCK indoor day/night speed dome G-Cam/GNSD1682



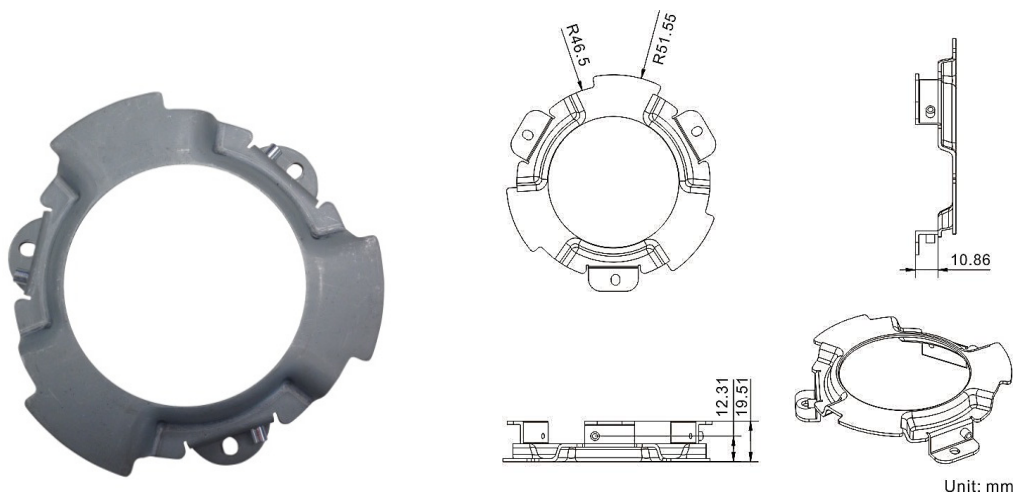
Mounting Accessories

Hard Ceiling Mount (Standard Equipment)

For Hard Ceiling Installation.

Height: 19.51 mm (0.77 inches); Diameter of the bracket: 103.1 mm (4.06 inches);

Weight: 65.0 g (0.14 lbs).

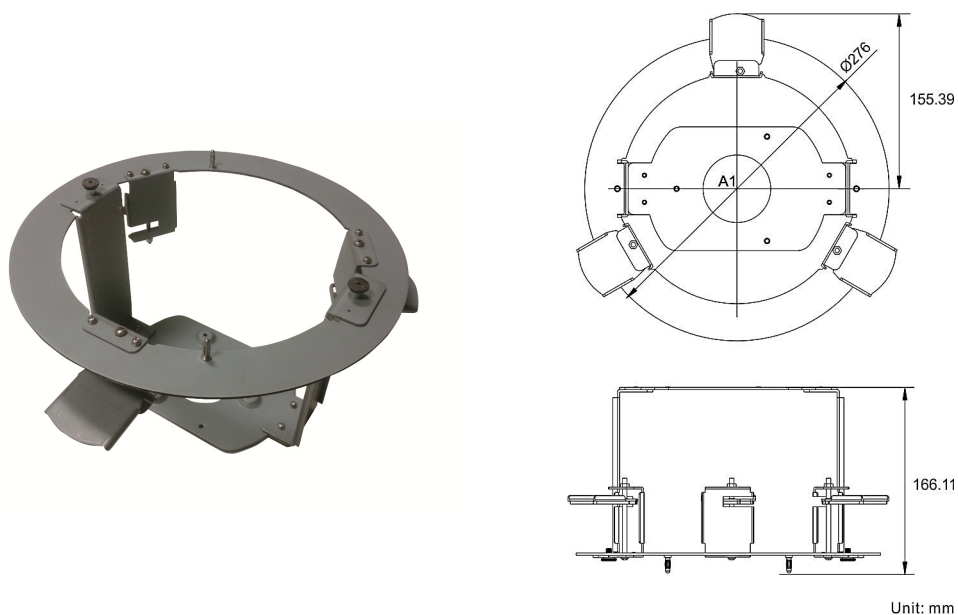


G-Cam/BFC-002 Order-No.: 5.04875 (optional)

For In-Ceiling Installation.

Height: 166.11 mm (6.54 inches); Diameter: 276.0 mm (10.9 inches);

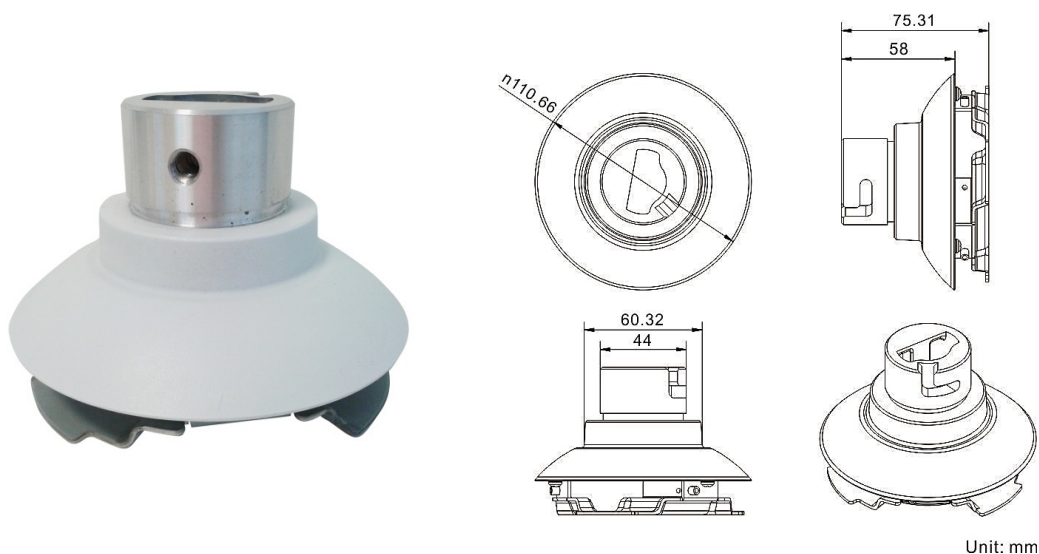
Weight: 1.1 kg (2.4 lbs).



G-Cam/BDA-002 Order-No.: **5.04876** (optional)

Height (with Hard Ceiling Mount): 75.31 mm (2.96 inches); Height: 58.0 mm (2.3 inches);

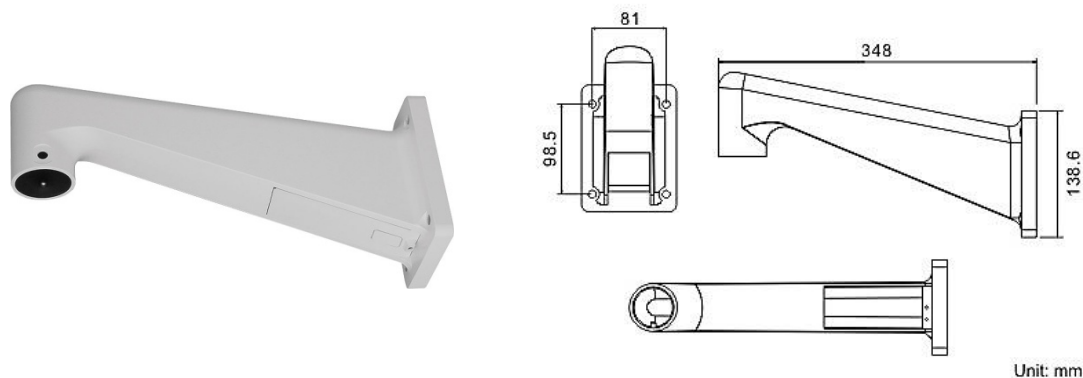
Total Width: 110.66 mm (4.36 inches); Weight: 260.0 g (0.57 lbs).

**G-Cam/BWM-004** Order-No.: **5.04869** (optional)

White; 348.0 x 104.0 x 138.6 mm (13.7 x 4.1 x 5.5 inches); 1.5 kg (3.3 lbs);

Diameter: 45.0 mm (1.8 inches).

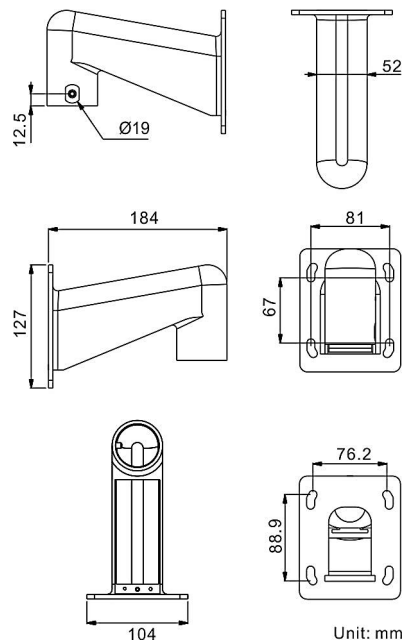
Supplied with M8x12 screw x 1, spring washer-8 x 1, pendant tube washer x 1, rubber washer-8 x 1 and sponge x 2.



G-Cam/BWM-001 Order-No.: **5.04864** (optional)

184.0 x 104.0 x 127.0 mm (7.2 x 4.1 x 5.0 inches); 0.6 kg (1.32 lbs).

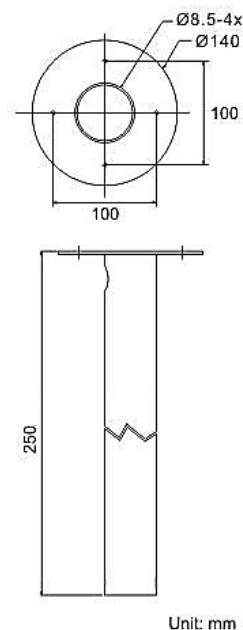
Supplied with rubber washer-8 x 1, pendant tube washer x 1, spring washer-8 x 1 and M8x12 screw x 1.

**G-Cam/BPE-001** Order-No.: **5.04862** (optional)

Iron; Height: 250.0 / 500.0 mm (9.8 / 19.7 inches);

Diameter: 50.0 mm (2.0 inches) 1.0 kg (2.2 lbs) / 1.8 kg (4.0 lbs).

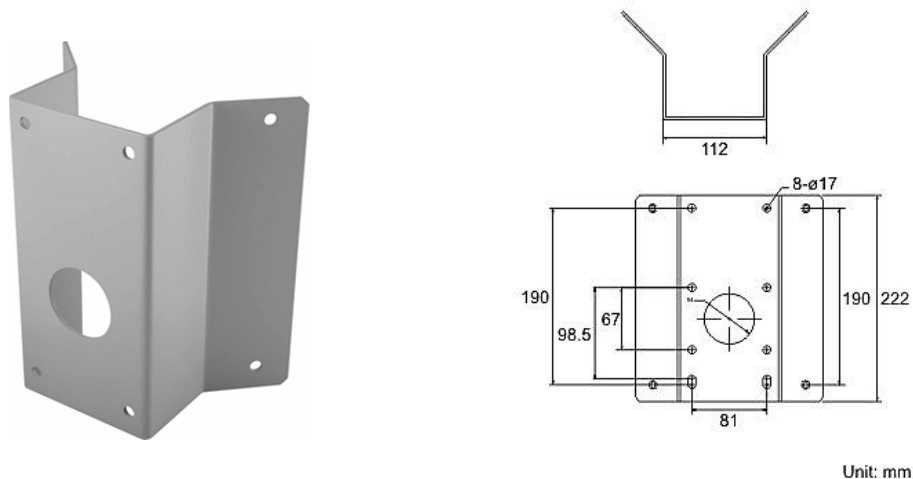
Supplied with M8x12 screw x 1, spring washer-8 x 1, pendant tube washer x 1, rubber washer-8 x 1 and waterproof rubber x 1.



G-Cam/CMA-004 Order-No.: **5.04870** (optional)

222.0 (L) x 204.0 (W) x 117.0 (D) mm (8.7 x 8.0 x 4.6 inches); 2.0 kg (4.4 lbs).

Supplied with washer-8 x 4, spring washer-8 x 4, M8x16 screw x 4, and M8 nut x 4.

**Pole Mount Adapter GSD/PMA-003** Order-No.: **5.18374** (optional)

Pole mount adapter for outdoor domes

Suitable only in combination with GSD/BWM-003 (5.04802) or G-Cam/BWM-004 (5.04869).

Dimensions in mm (W x H x D): 137 x 182 x 50, Material: Stainless steel (1.4571)

Weight: Approx. 1.0 Kg

Accessories: 2 x tension band with locking and 4 x hexagon screw M8 x 30.

For the locking a wrench M5 is necessary.



6.2 Ceiling Mount

Generally, there are three kinds of Dome Camera ceiling mounting methods: hard-ceiling, in-ceiling and mounting with Straight Tube. Refer to the following sections for more details.

6.2.1 Hard Ceiling Mounting

Hard Ceiling Mount is a standard installation for an indoor Dome Camera, and general mounting accessories are equipped in the standard indoor Dome Camera's package. Below lists the items and tools needed to mount the Dome Camera onto the ceilings. The supplied items are all in the Dome Camera's package.

Hard Ceiling Mount Package Contents:

- Hard Ceiling Mount x 1
 - M4 Self-tapping Screw x 5
 - Plastic Anchors x 5
 - Fixing Plate x 1
 - M3 Standard Screw x 4 (3 for Fixing Plate, 1 for Dome Cover*)
- (*) Security Screw will be supplied instead of Standard Screw for Vandal Proof Camera Dome Cover.

Tools Needed:

- Tool for drilling
- (+,-) Screw Driver

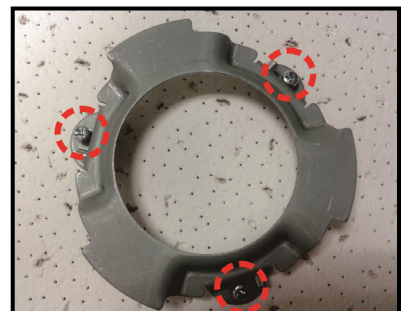
Follow the steps below to install the Dome Camera onto the ceiling.

STEP 1

Mark the positions of the three screw holes on the Hard Ceiling Mount at the chosen installation location.

STEP 2

In the marked locations, drill each hole slightly smaller than the supplied Screw Anchors, and put supplied anchors into these drilled holes. Then fasten the Hard Ceiling Mount with the three supplied Self-tapping Screws.

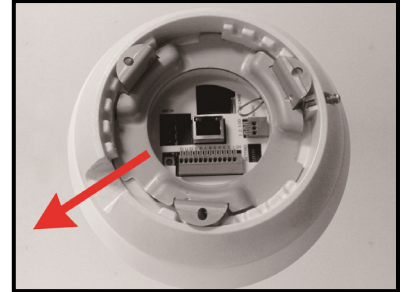


STEP 3

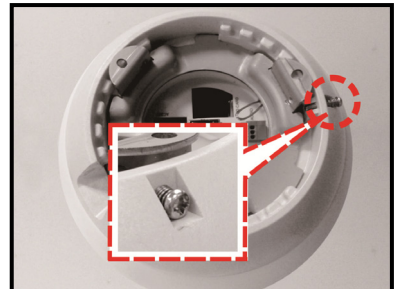
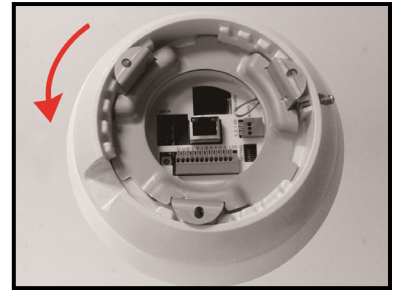
Thread the Data Cable and Ethernet Cable through the center hole of the Mount and connect the cable to the camera body.

STEP 4

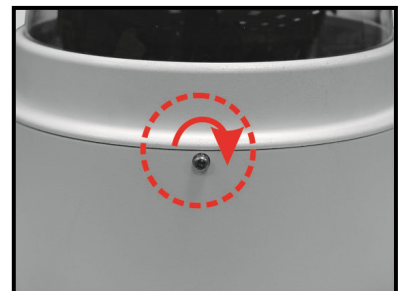
Users can choose to hide the Data Cable and Ethernet Cable inside the ceiling, and put the rubber from the accessory package to fill the gap at the side of the Fixing Plate. Or let the cables out from the gap on the side of the Fixing Plate (as shown in the diagram).

**STEP 5**

Install the camera on the fixed Hard Ceiling Mount by turning the camera clockwise. Then tighten the screw at the side of the Fixing Plate.

**STEP 6**

After installing the camera on the Hard Ceiling Mount, put the Dome Cover back. Then, fasten the supplied Standard Screw (Security Screw for Vandal Proof Dome) on the Dome Cover.



6.2.2 In-Ceiling (T-Bar) Mounting

Below lists the items and tools needed to mount the Dome Camera into the ceilings. The supplied items are all in the Dome Camera package.

Package Contents:

- Lock Bar x 1
- M3x6 Screw x 2
- Ceiling Sticker x 1
- Trim Ring x 1

Items Needed:

- Dome Camera
- Power Cable
- Ethernet Cable (Network Dome Camera)
- T-Bar (optional accessory)
- Ceiling Sticker (equipped with T-Bar)
- Decoration Ring (supplied)

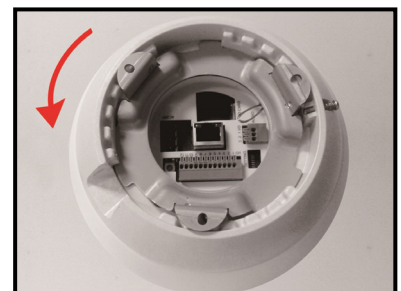
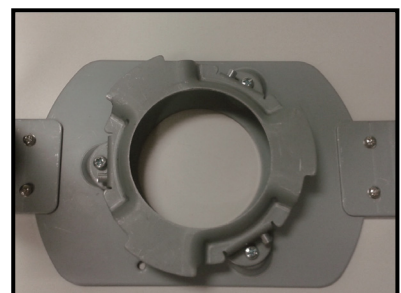
Tools Needed:

- Tool for cutting a circle on the ceiling
- (+,-) Screw Driver

Follow the steps to install the Dome Camera with T-Bar Ceiling Mount accessory for in-ceiling mounting.

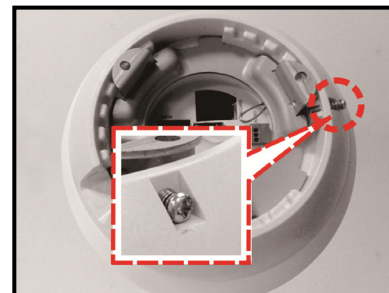
STEP 1

Install the camera on the fixed Hard Ceiling Mount by turning the camera clockwise. Then tighten the screw at the side of the Fixing Plate.



STEP 2

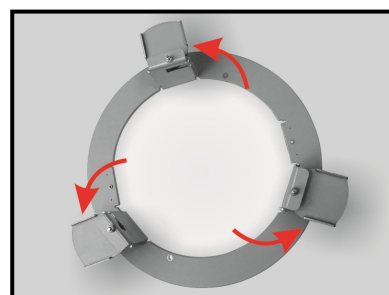
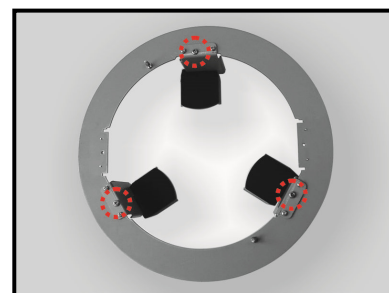
Tighten the screw at the side of the Fixing Plate. Finishes install the camera on T-Bar Bottom Mount.

**STEP 3**

Place the Ceiling Sticker on the ceiling plate, and cut the circle part out of the ceiling.

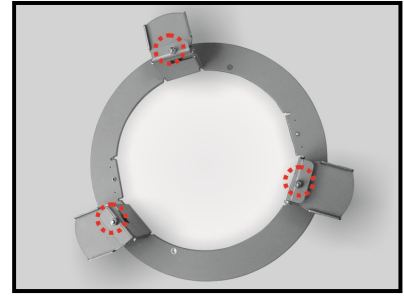
**STEP 4**

Disassemble the wings from the In-Ceiling (T-Bar) Mount by loosening three screws counterclockwise (indicated in the diagram). Loosen the screws till the wings are loosed enough and turn out from the ring (as shown in the second diagram).



STEP 5

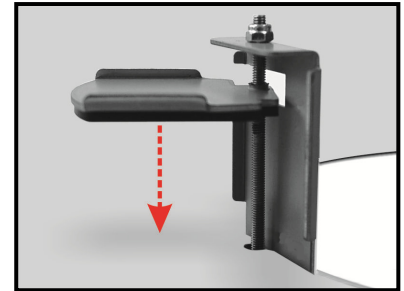
Put up the T-Bar Bracket into the ceiling opening and fix the In-Ceiling (T-Bar) Mount on the ceiling by tightening three screws clockwise.

**STEP 6**

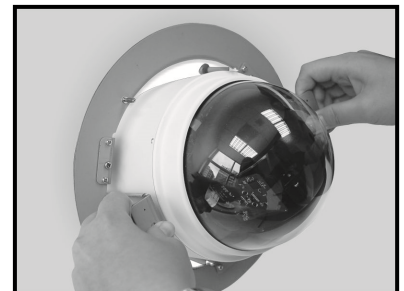
When screwing, the wings will get approached to the ceiling board until it is completely flush with the board.



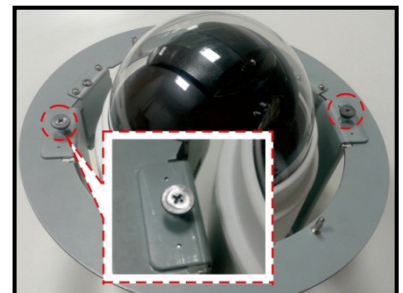
NOTE: Please make sure the wings of the T-Bar Bracket are completely flush with the ceiling board.

**STEP 7**

Put the Power Cable and Ethernet Cable down through the center hole of the T-bar and connect it to the camera.

**STEP 8**

Put the installed T-Bar Bottom Mount with camera into the ceiling opening.

**STEP 9**

Tighten the screws to fix T-Bar Bottom Mount on the T-Bar Bracket.

**STEP 10**

Fix the Trim Ring to the T-Bar Bracket.



6.2.3 Ceiling Mounting with Indoor Mounting Kit

Indoor Mounting Kit is able to work with other ceiling mounting accessories, such as Standard Pendant Mount, Compact Pendant Mount, Straight Tube and Swan Tube.

Here lists the items and tools needed to mount the Dome Camera onto the Indoor Mounting Kit. The supplied items are all in the Dome Camera package.

Package Contents:

- Indoor Mounting Kit x 1

Items Needed:

- Dome Camera
- Power Cable
- Ethernet Cable (Network Dome Camera)

Tools Needed:

- (+,-) Screw Driver

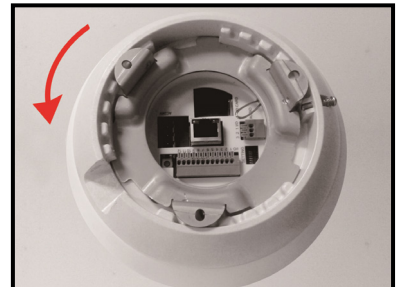
Follow the steps to install the Dome Camera onto the Indoor Mounting Kit.

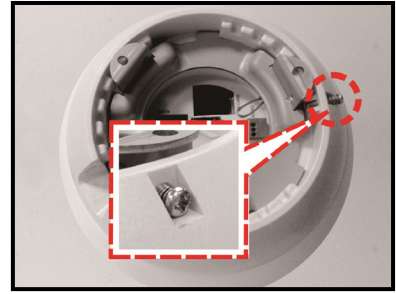
STEP 1

Thread the Data Cable and Ethernet Cable through the center hole of the Indoor Mounting Kit and connect the cable to the camera body.

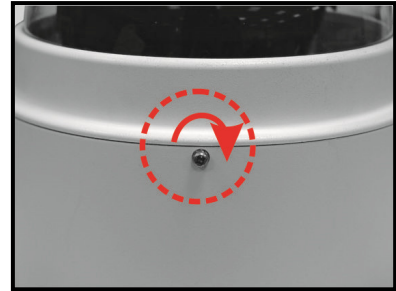
**STEP 2**

Install the camera on the Indoor Mounting Kit by turning the camera clockwise. Then tighten the screw on the side of the Fixing Plate.



**STEP 3**

After installing the camera on the Hard Ceiling Mount, put the Dome Cover back. Then, fasten the supplied Standard Screw (Security Screw for Vandal Proof Dome) on the Dome Cover.



6.2.4 Ceiling Mounting with Straight Tube

The Straight Tube is available in length: 25 cm.

Package Contents:

- M8x12 Screw x 1
- Spring Washer-8 x 1
- Pendant Tube Washer x 1
- Rubber Washer-8 x 1
- Waterproof Rubber x 1

Items Needed:

- Dome Camera
- Power Cable
- Ethernet Cable
- Straight Tube
- Screws and Screw Anchors for fixing the Straight Tube onto the ceiling

Tools Needed:

- Tool for drilling
- Tool for screwing

Follow the steps to mount the Dome Camera with the Straight Tube.

STEP 1

Ensure that the ceiling can support the weight of the Dome Camera and Straight Tube.

STEP 2

Make a cable entry hole on the ceiling.

STEP 3

Fix the suspension bracket to the ceiling with proper screws and screw anchors.

STEP 4

Thread the cables through the Straight Tube and the Mounting Kit.



NOTE : After threading the cables, please block the cable entry hole with the supplied sponge(s) to avoid insects entering the tube.

STEP 5

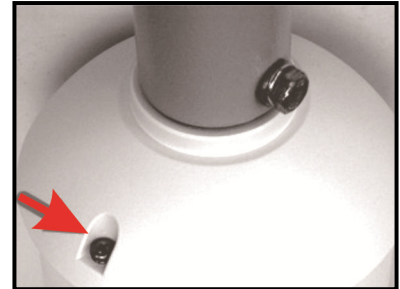
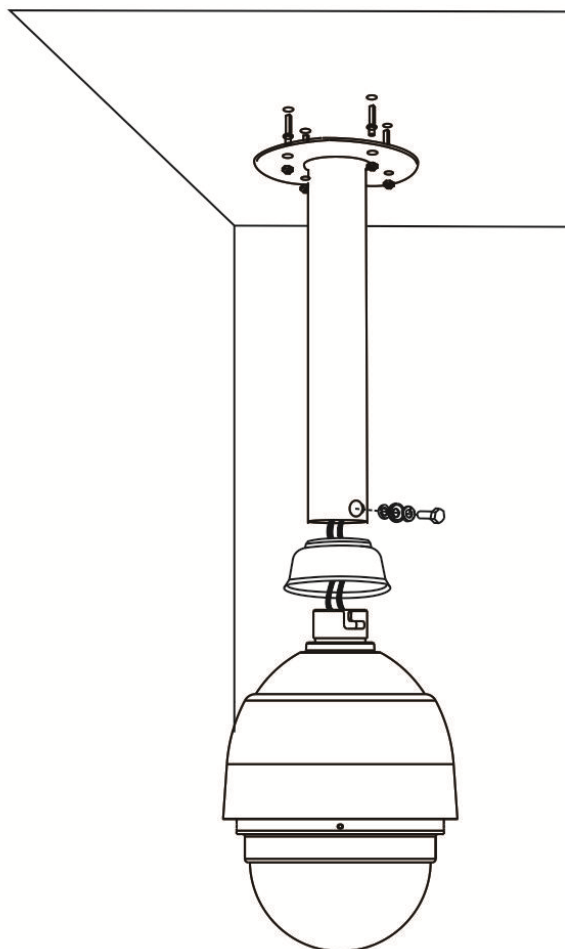
Fix the Mounting Kit to the Straight Tube with the supplied screws and washers.

STEP 6

Connect the cables to the Dome Camera.

STEP 7

Mount the Dome Camera to the Mounting Kit. (Ensure the Dome Camera is fixed completely, and the thread holes on the Lock Screw Plate and Mounting Kit are aligned). Afterwards, screw the supplied M5 standard screw / security screw, as shown in the picture.

**Ceiling Mounting: Straight Tube**

6.3 Wall Mount

The Dome Camera can be mounted on the wall with Compact Pendant Mount, Standard Pendant Mount and Wall Box. Please follow the installation instructions below for mounting the Dome Camera via different ways.

6.3.1 Compact Pendant Mount

Package Contents:

- Rubber Washer-8 x 1
- Pendant Tube Washer x 1
- Spring Washer-8 x 1
- M8x12 Screw x 1

Items Needed:

- Dome Camera
- Power Cable
- Ethernet Cable
- Compact Pendant Mount and equipped items (optional accessory)
- Mounting Kit
- Waterproof Rubber
- Screws and Screw Anchors for fixing the Compact Pendant Mount

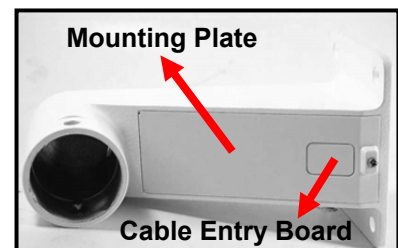
Tools Needed:

- Tool for drilling
- Tool for screwing

Follow the steps below to mount the Dome Camera with the Compact Pendant Mount.

STEP 1

Make a cable entry hole on the wall to recess the cables. Otherwise, users could push up the Cable Entry Board on the Compact Pendant Mount's Mounting Plate to place the cables, as shown in the photo below.

**STEP 2**

Fix the Compact Pendant Mount on the wall with proper screws and screw anchors.

STEP 3

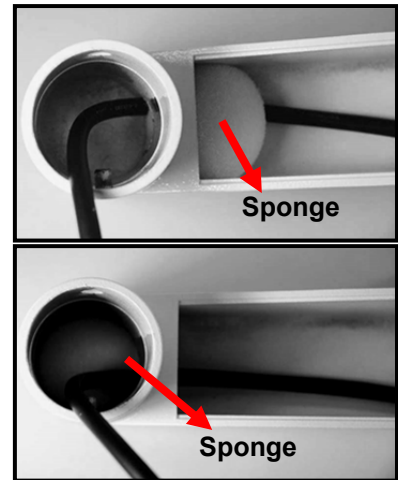
Attach the Waterproof Rubber to the Compact Pendant Mount.

STEP 4

Run the cable(s) through the Compact Pendant Mount.



NOTE: Please block the cable entry hole with the supplied sponge to avoid insects entering the Pendant Mount. The sponge can be placed in two ways as shown in the illustrations below.

**STEP 5**

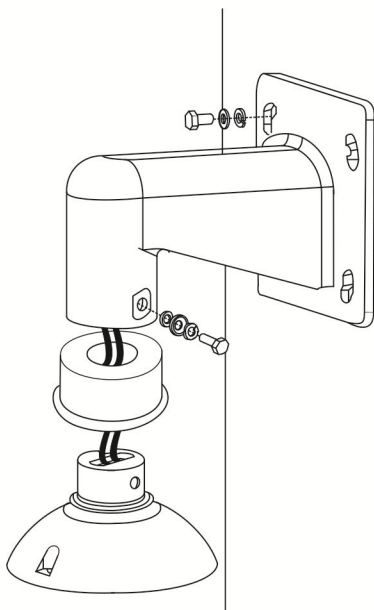
Thread the cable(s) through the Mounting Kit and join the Mounting Kit to the Compact Pendant Mount with the supplied screws and washers. Then adjust the Waterproof Rubber to the joint.

STEP 6

Connect the cable(s) to the Dome Camera.

STEP 7

Join the Dome Camera to the Mounting Kit with the supplied screw and washers.

Wall Mounting: Compact Pendant Mount + Mounting Kit

6.3.2 Standard Pendant Mount

Package Contents:

- M8x12 Screw x 1
- Spring Washer-8 x 1
- Pendant Tube Washer x 1
- Rubber Washer-8 x 1
- Sponge x 2

Items Needed:

- Dome Camera
- Power Cable
- Ethernet Cable
- Standard Pendant Mount and equipped items (optional accessory)
- Mounting Kit
- Waterproof Rubber
- Screws and Screw Anchors for fixing the Standard Pendant Mount onto the ceiling

Tools Needed:

- Tool for drilling
- Tool for screwing

Follow the steps below to mount the Dome Camera with the Standard Pendant Mount.

STEP 1

Make a cable entry hole on the wall to recess the cables. Otherwise, users could push up the cable entry board on the Standard Pendant Mount's mounting plate to place the cables (refer to the illustration in section [6.3.1 Compact Pendant Mount> Step 1](#)).

STEP 2

Fix the Standard Pendant Mount on the wall with proper screws and screw anchors.

STEP 3

Attach the Waterproof Rubber to the Standard Pendant Mount.

STEP 4

Run the cable(s) through the Standard Pendant Mount.



NOTE: Please block the cable entry hole with the supplied sponge to avoid insects entering the Pendant Mount. Refer to the illustrations in section [6.3.1 Compact Pendant Mount> Step 4](#).

STEP 5

Thread the cable(s) through the Mounting Kit and join the Mounting Kit to the Standard Pendant Mount with the supplied screws and washers. Then adjust the Waterproof Rubber to the joint.

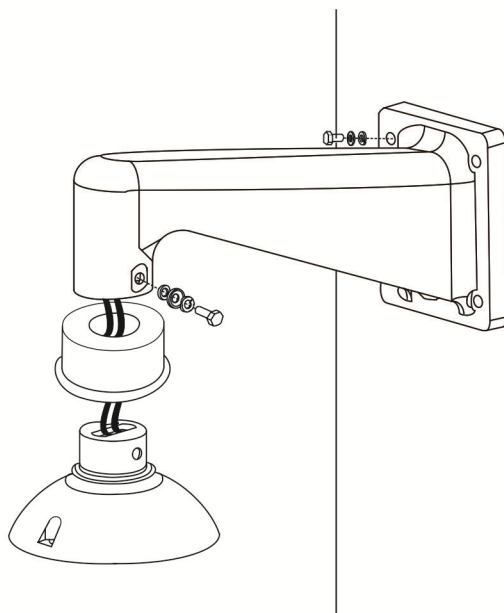
STEP 6

Connect the cable(s) to the Dome Camera.

STEP 7

Join the Dome Camera to the Mounting Kit with the supplied screw and washers.

Wall Mounting: Standard Pendant Mount + Mounting Kit



6.4 Corner Mount

6.4.1 Corner Standard Mounting Plate

Package Contents:

- Washer-8 x4
- Spring Washer-8 ×4
- M8x16 Screw x4
- M8 Nut x4

Items Needed:

- Dome Camera
- Power Cable
- Ethernet Cable
- Standard / Compact Pendant Mount and equipped items (optional accessory)
- Corner Standard Mounting Plate / Corner Plate Mini (optional accessory)
- Mounting Kit
- Waterproof Rubber
- Screws and Screw Anchors for fixing the Corner Mounting Plate

Tools Needed:

- Tool for drilling
- Tool for screwing

Follow the steps below to mount the Dome Camera with the Corner Thin / Wide Box and Standard / Compact Pendant Mount.

STEP 1

Make a cable entry hole on the wall to recess the cable(s).

STEP 2

Fix the Corner Mounting Plate on the corner of the wall with proper screws and screw anchors. Then run the cable(s) through the hole on the Corner Mounting Plate.

STEP 3

Fasten the Standard / Compact Pendant Mount onto the Corner Mounting Plate with the supplied screws and washers. Then thread the cable(s) through the Standard / Compact Pendant Mount with the cable(s) coming out of the Pendant Mount's outlet.



NOTE: Please block the cable entry hole with the supplied sponge to avoid insects entering the Pendant Mount. Refer to the illustrations in section [6.3.1 Compact Pendant Mount> Step 4](#).

STEP 4

Attach the Waterproof Rubber to the Standard / Compact Pendant Mount.

STEP 5

Thread the cable(s) through the Mounting Kit and join the Mounting Kit to the Standard / Compact Pendant Mount with the supplied screws and washers. Then adjust the Waterproof Rubber to the joint.

STEP 6

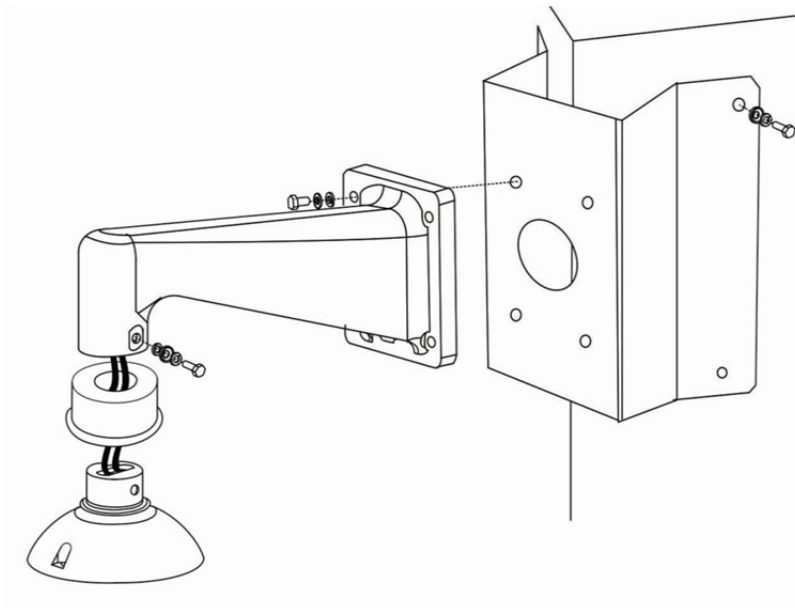
Connect the cable(s) to the Dome Camera.

STEP 7

Join the Dome Camera to the Mounting Kit with the supplied screw and washers.

Corner Wall Mounting:

Corner Standard / Mini Mounting Plate + Standard / Compact Pendant Mount + Mounting Kit



6.5 Pole Mount

6.5.1 Pole Thin / Wide Direct Mounting

Package Contents:

- Stainless Steel Straps x 4
- M8x16 Screw x 4
- Washer x 4
- Spring Washer-8 x 4

Items Needed:

- Dome Camera
- Power Cable
- Ethernet Cable
- Standard / Compact Pendant Mount and equipped items (optional accessory)
- Pole Thin / Wide Direct Mounting (optional accessory)
- Mounting Kit
- Waterproof Rubber
- Stainless Steel Straps for fixing the Pole Thin / Wide Direct Mounting

Tools Needed:

- Stainless Strap Cutter
- Tool for screwing

Follow the steps below to mount the Dome Camera with the Pole Thin / Wide Direct Mounting and Standard / Compact Pendant Mount.

STEP 1

Fasten the Pole Thin / Wide Direct Mounting on a pole with equipped stainless straps.

STEP 2

Run the cable(s) through the hole on the Pole Thin / Wide Direct Mounting.

STEP 3

Fasten the Standard / Compact Pendant Mount onto the Pole Thin / Wide Direct Mounting with the supplied screws and washers. Then thread the cable(s) through the Standard / Compact Pendant Mount with the cable(s) coming out of the Pendant Mount's outlet.



NOTE: Please block the cable entry hole with the supplied sponge to avoid insects entering the Pendant Mount. Refer to the illustrations in section [6.3.1 Compact Pendant Mount> Step 4](#).

STEP 4

Attach the Waterproof Rubber to the Standard / Compact Pendant Mount.

STEP 5

Thread the cable(s) through the Mounting Kit and join the Mounting Kit to the Standard / Compact Pendant Mount with the supplied screws and washers. Then adjust the Waterproof Rubber to the joint.

STEP 6

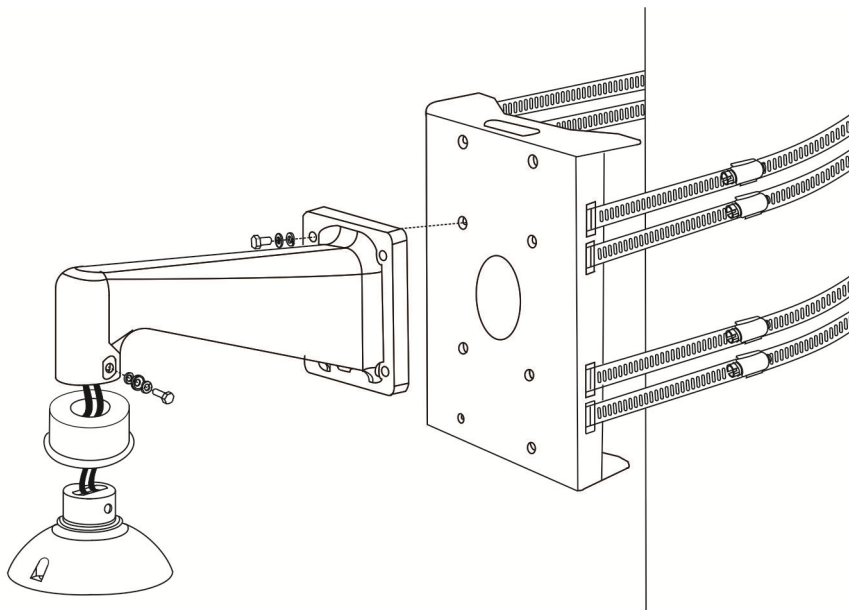
Connect the cable(s) to the Dome Camera.

STEP 7

Join the Dome Camera to the Mounting Kit with the supplied screw and washers.

Pole Direct Mounting:

Pole Thin / Wide Direct Mounting + Standard / Compact Pendant Mount + Mounting Kit



Appendix A: Technical Data G-Cam/ESD-3160

Image sensor (Chip) / Scanning system	1/2,8" Sony Progressive CMOS / Progressive Scan
Horizontal resolution	1080p
Minimum sensitivity	0,5 Lux Farbe; 0,095 Lux SW/F1.6
White balance	Automatic / Manual / Indoor / Outdoor / ATW
Shutter	1/1 - 1/10,000 s
Back-light compensation	On / Off
Automatic gain control (AGC)	Automatic / Manual
Wide dynamic range	Ultra WDR (Shutter WDR > 96 dB)
LAN interface	RJ45 connector, 10/100Base-TX
Colour / B/W switching	Automatic/Manual (IR-cut filter)
Privacy masking	16 adjustable masking zones via on screen menu
Lens	4.3 mm to 129.0 mm (optical)
Zoom ratio (optical) / (digital)	30x / 1x - 12x proportional
Proportional zoom	On / Off
Panning range	360° endless
Tilting range	-10° to 190°
Panning/Tilting speed	0.5°/s to 90°/s (manual)
Preset speed	5°/s to 400°/s (pan/tilt)
Preset accuracy	0.225°
Auto flip / Digital flip	Yes; Image, mechanical, off
Auto focus	Automatic / Manual
Preset positions	256 positions
Sequence	Yes; 8 x
Cruise	Yes; 8 x
Auto Pan	Yes; 4 x
Network interface	10 / 100 Mb Ethernet (RJ-45)
Communication protocol	IPv4/v6, TCP/IP, UDP, RTP, RTSP, HTTP, HTTPS, ICMP, FTP, SMTP, DHCP, PPPoE, UPnP, IGMP, SNMP, IEEE 802.1x (EAP-TLS), QoS, ONVIF, ARP
Picture compression	H.264 / MJPEG
Picture resolution in pixel	1080p / SXGA / 720p / XGA / SVGA / D1 / VGA / CIF
Picture ratio (NTSC/PAL)	1080p (30/25 fps) + D1 (30/25 fps)
Access control	User Account + Password Protection
Motion Detection	On / Off
Alarm In/Outputs	4 / 2
Alarm reactions	Preset, Sequence, Auto Pan, Cruise
Home Function	Preset, Sequence, Auto Pan, Cruise
memory media	micro SDHC 32 GB
Supported Web Browser	Internet Explorer 6.0+/Chrome/Firefox/Safari
Audio transmission	Bi-directional, G.711/G.726
Operating temperature	0 °C bis + 40 °C
Protective rating	IP 20
Voltage supply	24 VAC (20 - 27 VAC) / 24 VDC (20 - 38 VDC); PoE+ (-30 W > Model see Homepage)
Power consumption	Approx. 24 W
Dimensions in mm (Diameter x H)	171,7 x 228,71 (w/sunshield)
Weight	Approx. 1.6 Kg
Certificates	CE, FCC, RoHS
Order No.	5.04670
Optional accessory	G-Cam/BDA-002 (5.04876), G-Cam/BFC-002 (5.04875), GSD/BWM-001 (5.04864), GSD/BPE-001 (5.04862), G-Cam/BWM-004 (5.04869), G-Cam/CMA-004 (5.04870), PSU-24VAC/80VA/Boxed (5.14040), G-Cam/PoE-Adapter-05 (5.03035)

Technical Data G-Cam/ESD-3270

Abtastsystem	Progressive Scan
Horizontale Auflösung	1080p
Minimale Empfindlichkeit	0,55 Lux Farbe; 0,095 Lux SW/F1.6
Weißabgleich	Automatisch / Manuell / Innen / Außen / ATW
Shutter	1/1 - 1/10.000 s
Gegenlichtkompensation	An / Aus
Automatische Verstärkungsregelung (AGC)	Automatisch / Manuell
Erweiterter Dynamikbereich	Ultra-WDR (Shutter-WDR > 96 dB)
LAN-Schnittstelle	RJ45 Anschluss, 10/100Base-TX
Farb- / S/W-Umschaltung	Automatisch/Manuell (IR-Schwenkfilter)
Elektronische Sichtschutzfunktion (Privacy masking)	16 Sichtschutzzonen einstellbar über On Screen Menü
Objektiv	4,3 - 129 mm
Zoomfaktor (Optisch)	30fach
Zoomfaktor (Digital)	1fach - 12fach proportional
Proportionaler Zoom	An / Aus
Schwenkbereich	360° endlos schwenken
Neigebereich	-10° bis 190°
Schwenk-/Neigegeschwindigkeit	0,5°/s bis 90°/s (Manuell)
Geschwindigkeit bei Festpositionen	5°/s bis 400°/s (Schwenken/Neigen)
Anfahrgeauigkeit	0,225°
Automatisches Wechseln der Blickrichtung (Auto Flip)	Ja; Bilddrehung, mechanisch, aus
Automatische Fokussierung (Auto Fokus)	Automatisch / Manuell
Anzahl Festpositionen	256 Festpositionen
Sequenz-Modus	Ja; 8 x
Kontur-Modus (Patrouille)	Ja; 8 x
Automat. Schwenken	Ja; 4 x
Netzwerk Interface	10 / 100 Mb Ethernet (RJ-45)
Kommunikationsprotokoll	IPv4/v6, TCP/IP, UDP, RTP, RTSP, HTTP, HTTPS, ICMP, FTP, SMTP, DHCP, PPPoE, UPnP, IGMP, SNMP, IEEE 802.1x (EAP-TLS), QoS, ONVIF, ARP
Bildkompression	H.264 / MJPEG
Bildauflösung in Pixel	1080p / SXGA / 720p / XGA / SVGA / D1 / VGA / CIF
Bildrate (NTSC/PAL)	1080p (30/25 fps) + D1 (30/25 fps)
Zugriffssicherheit	Anwenderzugang + Passwortschutz
Bewegungserkennung	An / Aus (4 Sets)
Alarm-Ein-/Ausgänge	4 / 2
Alarm-Reaktionen / Home Funktion	Festposition, Tour, Auto-Schwenken, Patrouille
Speichermedium	micro SDHC 32 GB
Unterstützte Webbrowser	Internet Explorer 6.0+/Chrome/Firefox/Safari
Audio-Übertragung	Bidirektional, G.711/G.726
Betriebstemperatur	- 45 °C bis + 50 °C
Schutzklasse	IP 66
Spannungsversorgung	24 VAC (20 - 27 VAC) / 24 VDC (20 - 38 VDC); High PoE (60 W -> Typ s. Homepage)
Leistungsaufnahme	max. 59 W (mit Heizung)
Abmessungen in mm (D x H)	191,97 x 282,11 (mit Sonnenschutz)
Gewicht	Ca. 2,3 Kg
Zertifikate	CE, FCC, RoHS
Bestell-Nr.	5.04680
Optionales Zubehör	G-Cam/PoE-Adapter-06 (5.03036), G-Cam/BWM-004 (5.04869) G-Cam/CMA-004 (5.04870), GSD/PMA-003 (5.18374) GSD/BPE-001 (5.04862), PSU-24VAC/80VA/Boxed (5.14040)

Appendix B: Video Resolution

720P- Dual Streams

H.264-1 + H.264-2 / MJPEG	
H.264-1	H.264-2 / MJPEG
1280 x 720 (30 fps)	800 x 600 (60 fps)
	720 x 480 (60 fps)
	640 x 480 (60 fps)
1280 x 720 (60 fps)	352 x 240 (60 fps)
800 x 600 (60 fps)	800 x 600 (60 fps)
	720 x 480 (60 fps)
	640 x 480 (60 fps)
	352 x 240 (60 fps)
720 x 480 (60 fps)	720 x 480 (60 fps)
	640 x 480 (60 fps)
	352 x 240 (60 fps)
640 x 480 (60 fps)	640 x 480 (60 fps)
352 x 240 (60 fps)	352 x 240 (60 fps)
	352 x 240 (60 fps)

BNC function is not supported.

720P- Single Stream

H.264 / MJPEG Only
1280 x 720 (60 fps) Low Latency*
1280 x 720 (60 fps)
800 x 600 (60 fps)
720 x 480 (60 fps)
640 x 480 (60 fps)
352 x 240 (60 fps)

*This resolution is for H.264 only.

BNC function is not supported.

WDR ON / 1080P- Dual Streams

H.264-1 + H.264-2 / MJPEG	
H.264-1	H.264-2 / MJPEG
1920 x 1080 (15 fps)	1920 x 1080 (15 fps)
	1280 x 1024 (30 fps)
	1280 x 720 (30 fps)
	1024 x 768 (30 fps)
	800 x 600 (30 fps)
1920 x 1080 (30 fps)	720 x 480 (30 fps)
	640 x 480 (30 fps)
	352 x 240 (30 fps)
1280 x 1024 (30 fps)	1280 x 1024 (15 fps)
	1280 x 720 (30 fps)
	1024 x 768 (30 fps)
	800 x 600 (30 fps)
	720 x 480 (30 fps)
	640 x 480 (30 fps)
1280 x 720 (30 fps)	352 x 240 (30 fps)
	1280 x 720 (30 fps)
	1024 x 768 (30 fps)
	800 x 600 (30 fps)
	720 x 480 (30 fps)
1024 x 768 (30 fps)	640 x 480 (30 fps)
	352 x 240 (30 fps)
	1024 x 768 (30 fps)
	800 x 600 (30 fps)
	720 x 480 (30 fps)
800 x 600 (30 fps)	640 x 480 (30 fps)
	352 x 240 (30 fps)
	800 x 600 (30 fps)
	720 x 480 (30 fps)
720 x 480 (30 fps)	640 x 480 (30 fps)
	352 x 240 (30 fps)
	720 x 480 (30 fps)
640 x 480 (30 fps)	640 x 480 (30 fps)
352 x 240 (30 fps)	352 x 240 (30 fps)

BNC function is not supported.

WDR ON / 1080P- Single Stream

H.264/ MJPEG
1920 x 1080 (30 fps) Low Latency*
1920 x 1080 (30 fps)
1280 x 1024 (30 fps)
1280 x 720 (30 fps)
1024 x 768 (30 fps)
800 x 600 (30 fps)
720 x 480 (30 fps)
640 x 480 (30 fps)
352 x 240 (30 fps)

*This resolution is for H.264 only.

BNC function is not supported.

GEUTEBRÜCK

Excellence in Video Security

GEUTEBRÜCK GmbH

Im Nassen 7-9 | D-53578 Windhagen

Tel. +49 (0)2645 137-0 | Fax-999

info@geutebrueck.com

[**www.geutebrueck.com**](http://www.geutebrueck.com)